

Executive Summary of the STC’s Comprehensive Economic Development Strategy:

Based on feedback from the Economic Development Policy and Strategy Committee (EDPSC) members, this CEDS has been designed as a framework for integrating efforts of the organizations that serve the region and facilitating collaboration for resilient development. The EDPSC would like to quantify and leverage existing resources to increase the impact of economic development projects in the Southern Tier Central Region. This CEDS update will help STC accomplish the good work prioritized by the strong partners that support our region (government, nonprofit, and for-profit). This can be achieved by collaborating openly with the local governments, nonprofits and quasi-governmental organizations serving Chemung, Schuyler, and Steuben Counties, as well as giving strong consideration to developing a new mutual aid framework. After years of working collaboratively on increasingly significant projects, Southern Tier Central Regional Planning and Development Board is prepared to move forward with an integrated approach to regional development with the intention of promoting Public-Private Partnerships as well as the people, place, and profit conceptual framework.

Our Region flourishes due to the interconnections between the people, the economy, and natural resources. Additional information about the STC Region is included in the companion StoryMap ([link](#)). Regions like ours thrive when residents are supported in their personal and economic development goals, and where the local environment is able to support healthy people and resilient communities with strong regional employment and job growth (particularly the growth of well-paying jobs and small business innovation). This framework is called the “3 P’s”: people, planet/place, profit. The implementation of the 3 P’s and Public-Private Partnerships is possible through collaborative action. This CEDS documents the purpose, partners, and procedure to achieve collective action. While the partner organizations that form our

Economic Development Policy and Strategy Committee each have their own goals and funders, the EDPSC is united in a fundamental desire to maintain and improve our community by improving economic opportunity, quality of life, and human development. The STC Board Members, EDPSC Committee, and Human Services Committees’ members represent organizations that serve the region’s residents, businesses (small and large), and nonprofits. These committees, boards, and associations in the region deliver funding resources and support to projects that impact the landscape, human development, and economic development in our community. These efforts are possible through: Board members’ ability to influence public policy; grant writing and administration for communities; business development funding; private business perspective and first-hand knowledge of the local economic environment; project management; relationships and information sharing between State, local, and regional organizations; grant writing assistance for non-profits; project development assistance from the Industrial Development Agencies (IDAs) to employers; training for individuals seeking skill upgrades, a new career, or job search assistance, and; planning to maintain safety from and build resilience to potential environmental hazards in our communities. Brief highlights of a SWOT analysis of STC’s role in the community:

STRENGTHS -Neutrality -Experience -Regional approaches -Well respected	WEAKNESSES -Inadequate grant resources for desirable projects -High grant match requirements
OPPORTUNITY -Leveraged partnerships -Aligned approaches -Shared resources and efforts	THREATS -Substantial changes to the federal funding structure -Disengagement

Notable Goals and Topics of Interest in the STC Region, NYS State, and the Nation:

After evaluating the content of many plans, STC staff identified several specific areas of significant alignment between the local partner organizations and the State/Federal departments that influence policy and grant funding in this community. These significant areas of alignment can be combined into several categories, listed below with links to relevant documentation. These approved plans and strategies are the preferred approaches for improvement, as set forth by major funders and regulators. These goals are guide rails for CEDS projects and the recommended actions that follow. This CEDS will attempt to frame several upcoming projects through a loose Public-Private Partnership framework. Regional improvements will proceed in a more direct and predictable way, if development efforts are fully aligned with the approved goals of larger influential agencies (State/Federal).

Overall Goal: STC demonstrably supports beneficial projects locally within each county, and regionally through transparent and collaborative processes backed by best practices. STC will also promote and include Digital Infrastructure Access and Expertise into each of the following areas of interest.

Job Retention, Wage Growth, and Alleviating Poverty: [ARC](#), [EDA](#), [NYS](#), [HUD](#)

Improving workforce participation and wages to reduce poverty has long been a keystone goal of the Appalachian Regional Commission. The Economic Development Administration has also funded substantial efforts to alleviate poverty by incentivizing job-creating projects. Upgrading electrical grid capacity and increasing housing options will support future employment efforts. NYS, CSSWFNY, and STC's three county Social Services Departments are responsible for government-led antipoverty efforts directly for residents. ARC, EDA, NYS, and IDAs also support new employment projects which can reduce poverty (by offering employment to individuals). EDA prioritizes funding for industrial/manufacturing developments based on strong or growing economic clusters.

Improve: Health, Community, and Transportation: [HUD](#), [ARC](#), [NYS](#), [USDOT](#)

Healthy people, good transportation, childcare, and strong communities go hand-in-hand according to HUD, U.S. DOT, NYS, and ARC. Walkable communities (with education, employment, childcare, and retail options) that are accessible for all and suited for multi-modal transportation are parts of a thriving community. These 'innovations' to support healthy residents are encouraged by HUD, ARC, and NYS. Funding for grid capacity upgrades is necessary for most community development projects in the region. As shown in prior CEDS, Public-Private Partnerships are the current best practice for integrating these varied ideas into the local landscape for the betterment of the region's residents and the economy.

Technology, Innovation, and Environmental Resilience: [FEMA](#), [NYS](#), [EPA](#), [EDA](#)

The STC Region is ready for increased economic potential through development of new technology (including Industry 5.0) to increase human health and leverage environmental resources. Addressing the current impacts of environmental contamination, as well as working toward energy independence, are significant priorities for NYS and the U.S. FEMA, NYS, EPA, EDA, and STC's

three IDAs also support energy innovations and Industry 5.0 in the STC Region. Due to the industrial legacy in this region, some areas are impacted by actual or perceived contamination; therefore, urban redevelopment efforts should integrate advanced technology, community engagement, and environmental remediation efforts.

Community Emergency Preparedness: [FEMA](#), [EDA](#), [NYS DHSES](#)

Areas throughout the STC Region are impacted by flood and storm events with relative frequency. Efforts supporting preparedness, resilience, and grid stability/upgrades are important for STC. Places with stable resilient infrastructure are more likely to resist the physical, economic, and social effects of a disaster. Job retention is higher with strong and resilient local employers. A resilient community may be less afflicted by an event; local jobs will be retained and a stable community will be able to support neighboring areas that endured substantial impacts. Federal agencies like FEMA, EDA, and NYS DHSES support preparedness activities. FEMA, EDA, USDA-RD and NYS support rebuilding efforts after a disaster. Ensuring child care facilities are safe from disasters and can operate after disasters will facilitate quick recovery in the community.

Rural Development and Supporting Agriculture: [ARC](#), [EDA](#), [USDA](#), [NYS](#)

Increasing economic opportunity in the region's rural communities, as well as supporting profitable and resilient agriculture, has been a long-term goal for STC. STC's support includes raising awareness of NYS DEC wetland rules. Ag. partners can work together to support farmers planting specialty crops and mitigate regulatory phosphorus concerns. Grid-scale upgrades are necessary for rural development and to become energy independent. Forestry will likely rise in importance locally, and could become a fast-growing cluster in the Region.

Recommended Actions and Performance Measures: How

This CEDS is a guiding document for the actions of the Southern Tier Central Regional Planning and Development Board, a non-regulatory organization formed in the 1960s through the joint efforts of Chemung, Schuyler, and Steuben Counties. Therefore, the activities recommended in this CEDS must be consistent with STC's enabling legislation, bylaws, and STC's role in the region's organizational ecosystem. STC's Board, committee members, and partner organizations can improve the region and increase prosperity through 9 types of collaborative actions to support beneficial development:

- ① Information sharing/removing silos;
- ② Participation in collaborative project development;
- ③ Resource sharing (leverage match + staff);
- ④ Integrated program implementation/data-based follow-up;
- ⑤ Capacity building to facilitate innovative approaches;
- ⑥ Grant writing and collaborative project administration;
- ⑦ Sharing this comprehensive approach with regulatory bodies/funders, across peer organizations, and with the public/clients;
- ⑧ Supporting the 12 CEDS vital projects; and,
- ⑨ Supporting all CEDS listed projects in Appendix 1 (as appropriate).

Each of these mechanisms is beneficial in the short- and long-term; STC also plans to "Partner for Collective Impact" by linking economic development with the region's Human Service providers through the CEDS and an ARC *Grants to Grow* project. The three counties of the STC region are already very closely connected through workforce and the service/retail economy. Beneficial development in any of the STC counties will have positive effects in the other counties. As the benefits of greater collaboration become tangible, STC staff expects a shift toward additional sharing of information and resources. Enhanced collaboration opportunities can be cultivated by creating beneficial opportunities for discussion and building 'buy-in' from relevant regional entities.

Goal: STC clearly supports beneficial projects locally, within each county, and regionally through transparent and collaborative processes backed by best practices. Community planning, land use planning, grant writing, and staff assistance are the ways STC can support national, statewide, regional, and local initiatives. Toward this end, the outcomes of this Comprehensive Economic Development Strategy are progress toward the 5 notable goals, and 12 vital projects that will move the region toward those goals, through the 9 collaborative actions that support those projects, and completion of STC's 5 performance measures to evaluate the success of these efforts.

1) Add collaborative project development activities to STC's staff reports at STC Board meetings (**Performance Measure:** 10 projects supported with data, analysis, mapping, grant assistance, etc.)

2) STC staff and Board Members will engage in at least 6 collaborative efforts each year across any/all of STC's program areas. (**Performance Measures:** 2 STC's networking events; 500 emails; social media communications; and 2 collaboration opportunities).

3) Add inter-board reporting to STC's Board Agenda. Support Board Members with brief written summaries of relevant STC projects for inter-reporting to other Boards. (**Performance Measure:** 10 Board Members inter-report the activities of other relevant organizations at STC Board meetings and report STC activities to their other Boards).

4) Support the development of a consistent format for 'services offered' and 'referral' webpages among partners in the region & 211 or similar efficiency and access focused projects. (**Performance Measure:** 2 public engagements/ 100 website visits/ & Network map updates as needed)

5) Convene grant development meetings to assist with the difficult task of developing a new program while respecting organizational boundaries. (**Performance Measure:** 2 collaborative grants submitted per year).

Projects Vital to the Region’s Economic Growth: What

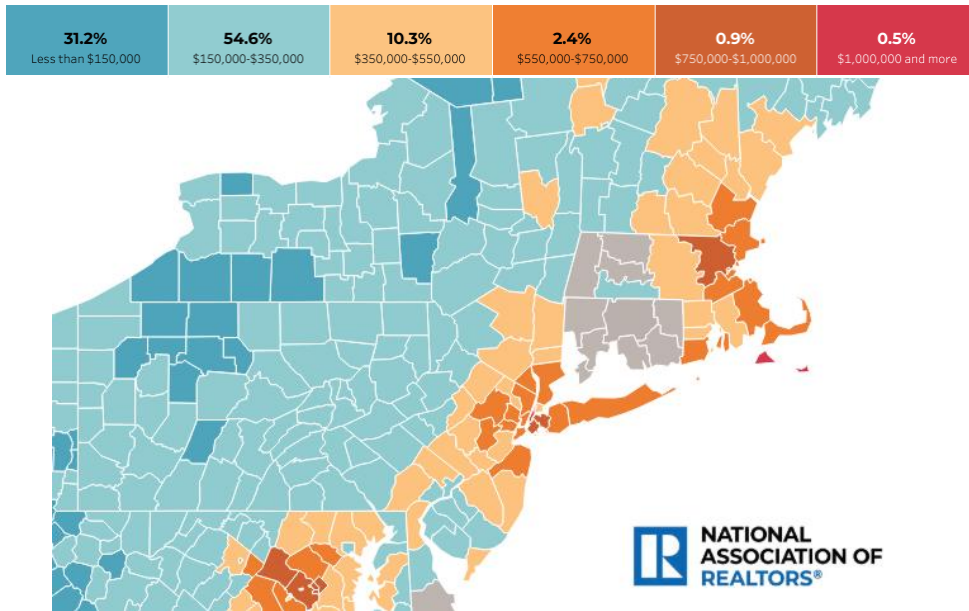
The following portion of the CEDS will include an overview of information about the 12 overarching vital projects in the STC Region between 2025 and 2030. Taken together, these large project ideas may be the most direct way to leverage investment to achieve resilient and durable community-wide improvements. These pages are meant to provide an attractive and 'easy to sell' overview of each vital project and it’s interconnected components. Each page contains information about the vital projects. Information on the projects includes estimated cost, impact, benefits, and anticipated implementation process. Similar details about other projects that support the vital project are also included. Community, infrastructure, and housing projects in the vicinity of the vital project that will contribute to, or benefit from, the vital projects have been incorporated. The addition of nonprofit projects will support the development of Public-Private -Partnerships as appropriate to incentivize or fund these vital projects. Workforce training projects and organizational interconnection projects that will support the 12 overarching vital projects are also included. Place-based development/promotion projects are included to ensure broad-based improvements in the community are made possible by linking the vital project to other projects with the 3 P's framework ([People, Planet/Place, Profit](#)). The full list of projects in the Comprehensive Economic Development Strategy is in Appendix 1.

STC’s proposed 12 overarching vital projects:

- ① **Regional Workforce Housing: Strategic development**
- ② **Grid Capacity Upgrades Throughout the Region**
- ③ **Workforce integration for youth/adults to fill available positions (tech, manufacturing, social service, healthcare, etc.).**
- ④ **Horseheads Area Advanced Logistics and Advanced Manufacturing Business Park**
- ⑤ **Big Flats-Horseheads Highway Corridor**
- ⑥ **Preserve Strategic Assets in Downtown Elmira (asset development + retention)**
- ⑦ **Central Schuyler Strategic Investments**
- ⑧ **Business Park: Schuyler Redevelopment**
- ⑨ **Southern Schuyler Strategic Investments**
- ⑩ **Corning - Erwin Strategic Investments**
- ⑪ **Greater Hornell Strategic Investments**
- ⑫ **Bath- Urbana -Hammondsport Route 54 Corridor Redevelopment**

Regional Workforce Housing: Strategic Development

\$100+ million overall project, serving all three counties, 33 new jobs, 1,000+ jobs retained in construction and human service



- * Housing need assessments (local, County, and regional housing studies). *\$25,000 - \$100,000 per project*
- * Implementation plans for new housing development (including potential for funding through municipal housing bonds). *\$100,000+*
- * Implementation plans incorporating workforce housing with State and Federal grants to serve identified populations. *\$100,000+*
- * Workforce training projects for Home Building, Construction, and Repair. *\$250,000 - \$5 mil. per project*
- * Assess offering grants for successful operations (construction, repair + new home construction). *Cost and feasibility not known*
- * Development of new senior living and mixed age facilities to "open up" the single-family housing market. *\$10-25 mil. per project*
- * Development of high intensity residential, with attractive amenities, in transit accessible places. *\$10-25 mil. per project*
- * Improve transportation options in the entire region and to other regions. *\$250,000 - \$5 mil. per project*
- * Promote USDA Home Repair programs and NYS CDBG programs (or similar). *Cost = In-kind services of existing partners*

Region wide solutions to the housing shortage and housing mis-match were identified as the #1 priority project for the region. Housing construction will act as a short-, medium-, and long-term driver for economic development. Planning projects, housing assessments, and strategic initiatives through any of the region's community partners can jump-start new construction and substantial updates to the region's housing stock. New Construction projects (with the highest costs, and the largest challenges to start) would have the largest impact on the economy, and are strongly supported in the CEDS. Remodeling and upgrades of existing structures (including non-residential structures) would be broadly beneficial for the region's economy and residents.

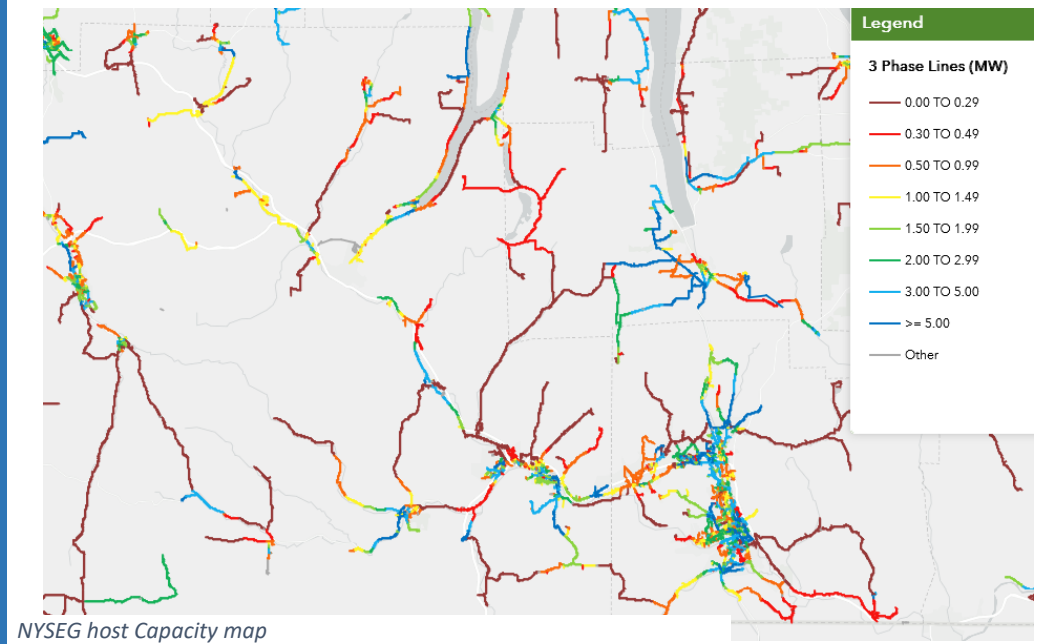


Grid Capacity Upgrades Throughout the Region

\$500+ Million overall project, serving all three counties

75 new jobs, retention of all existing jobs in the region

- * Regional plan to access NYS electric grid infrastructure funding for site improvements. *Cost and feasibility not known*
- * Local projects to meet CLCPA targets. *\$25-250 mil. per project NYPA, NYSEG/REG, and others*
- * Partner closely with Steuben Rural Electric. *Cost = In-kind services of existing partners*
- * Improve STC region's grids with new technology (and new delivery methods and onsite storage), *cost not yet determined.*
- * Support implementation of the SCOPED study on microgrids, and conduct additional microgrid studies as needed, *Cost TBD.*
- * Site specific electric infrastructure projects as prioritized by each County, *cost not yet determined.*



Any additional large-scale job-creating project in the region requires a connection to the electric grid, and this region's grid is nearing capacity. Working closely with the State and all partners to develop, fund, and implement a grid scale upgrade will enable new job creating projects to move forward without grid capacity concerns. Complete grid capacity upgrades will cost approximately \$300 billion, take 15+ years, and support all current jobs (assist in the retention of nearly 80,000 jobs). Estimates of approximately 500 new jobs could be created due to complete grid upgrades. In the short term, a \$500 million portion of grid upgrades would create a smaller number of jobs in the region. These jobs would be created in places which are currently limited by grid capacity. Each electrical infrastructure upgrade is a chance to improve the region's energy independence. The implementation process will include state partners at the NYS PSC and regional entities like NYSEG.

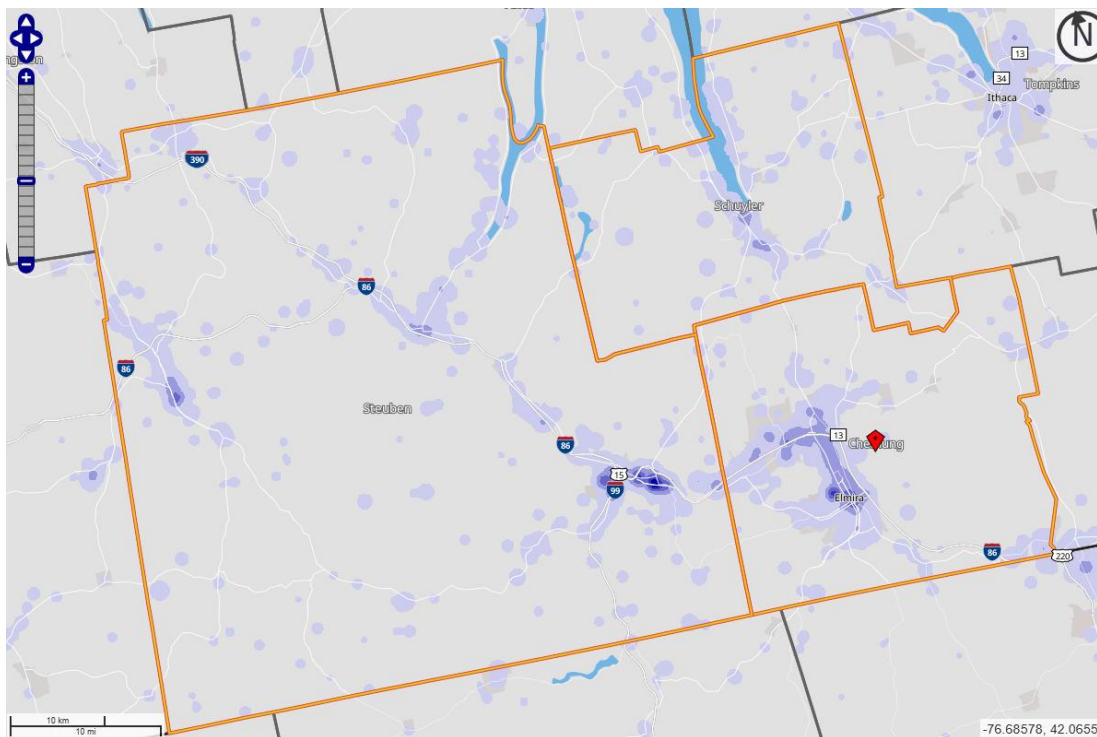
Workforce Integration for Youth/Adults to Fill Available Positions (tech, manufacturing, social service, healthcare, etc.) \$17+ million, approx. 2,000 trainees

Age related changes in the next 10 years will seriously impact the region's workforce.

Population by Age Cohort



Workforce is the future of the region. Improved skills, better workforce participation, and higher job retention is possible through collaboration with a mix of partners. Starting with this CEDS's People-Planet/Place-Profit framework and expanding into collaborative project development with the EDPSC partners, workforce upgrades will be at the forefront of each new project in the region. Projects designed to serve the region's residents of working age (16-65) could cost \$17+ million over 5 years, and benefit more than 2,700 workers with completed training or job placement. These training and skills-based learning experiences would benefit many of the region's employers, and could be implemented by leveraging local resources and seeking alternative funding pathways.



Work location for the region's residents.

- * Workforce projects to address needs in the human services sector, \$300,000 – \$3 million.
- * Workforce projects to meet workforce needs in High-tech rail sector, \$1.5 – \$3 million
- * Projects to address workforce needs around broadband and digital literacy, \$250,000 – \$3 million
- * Continued Implementation of the Twin Tiers ARISE Program, \$3 million - \$5 million
- * Implementation of the ARC/ STC Grants to Grow project, \$300,000 – \$3 million
- * Creation of a new adult-workforce integration project, cost not yet determined.
- * Prepare the region's workforce for Industry 5.0, cost not yet determined.

Horseheads Area Advanced Logistics and Advanced Manufacturing Business Park

\$100+ million in potential local investment, 300+ new jobs

Large-scale investment in high tech manufacturing in the Horseheads and Elmira Heights areas will contribute to long term economic stability in those communities and the surrounding region will also benefit. Large changes require coordinated planning efforts to fully utilize the opportunities for community enhancement and economic development. Partners will assess needs and roadblocks as well as the potential interconnection between infrastructure needs, workforce training needs, and community development needs. Regional strategies to leverage match and investment will be used to achieve significant improvements in employment, training, and community. Job creation in the Horseheads-Elmira-Heights area is closely linked with housing stock, electric grid capacity, and workforce training; overall success of the project will depend on many of these interconnected projects being successful from 2026-2030.

- * Business park near-site and site adjacent transportation improvements, *cost not yet determined.*
- * Infrastructure improvements: w/s/electric needs funded by Fast NY program. *\$4.5+ Million*
- * Assess potential for onsite housing with onsite daycare, *cost not yet determined.*
- * Workforce transportation study to serve sites with a public bus, *cost not yet determined.*
- * Southern Tier Logistics and Advanced Manufacturing Business Park, *\$60 million.*
- * High-Tech rail developments, industrial park *\$16+ million.*
- * Efforts aligned with the NYS workforce training programs, *Cost = In-kind time of partners.*
- * DOT project: BIN 1045970, SR 14 / Norfolk-So. RR, Superstructure replacement. *\$12.5 Million*
- * DOT projects; SR 14 MbC Paving project on Miracle Mile, Town of Horseheads – Philo Road West to Oakwood Avenue. *\$5.5 Million*
- * Chemung Canal Connector Trail Phase 2 & 3 *\$5+ Million*



Siemens Mobility to Build High-Speed Rail Manufacturing Plant in Horseheads, NY

Horseheads, NY – U.S. Senator Charles Schumer has announced that Siemens Mobility will establish a brand-new, high-speed rail manufacturing plant in Horseheads, marking a significant win for the Southern Tier.

Chemung County IDA, Chemung County – \$4,000,000: This project, located on North Main St in Horseheads, will allow for upgrades including improvements to the existing rail, water, sewer, and stormwater infrastructure to support planned growth and development at the site. The site improvements will enable the construction of an anticipated 765,000 square feet of modern manufacturing, warehousing and logistics facilities. This intermodal site has access to significant water and wastewater resources, is centrally located within two hours of three major cities and has received Foreign Trade Zone designation. Target markets for this site include battery and solar manufacturing and logistics warehousing. This shovel ready site will offer another opportunity for the battery supply chain to grow around the emerging Tech Hub in the Southern Tier.

Big Flats-Horseheads Highway Corridor

\$26+ million in potential local investment, 150+ new jobs

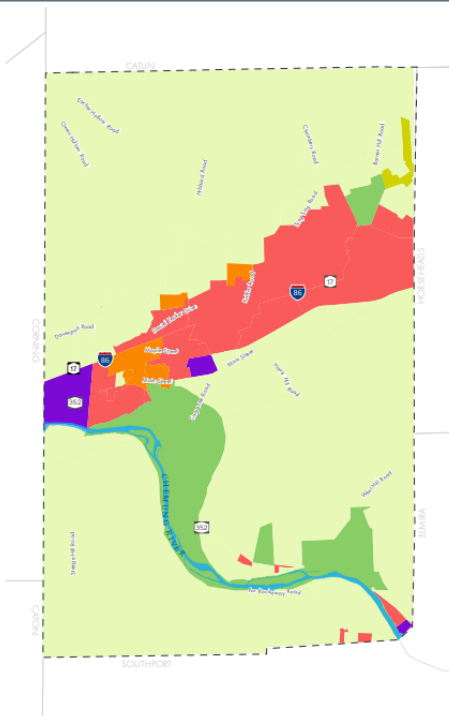
FUTURE LAND USE PLAN

2030 LAND USE PLAN FOR THE TOWN OF BIG FLATS

The 2030 Future Land Use Plan for the Town of Big Flats was created and modified with input from the Steering Committee as well as citizens at public meetings. The plan includes an increased focus on light industrial development, expansion of the pedestrian network, targeted residential growth, and defined mixed-use nodes and corridors.

Character Areas

The Future Land Use Plan identifies where specific development patterns and types are most appropriate, these are called Character Areas. These character areas are used to convey an overall vision for the future of the Town over the next ten years. The Character Areas for the Town of Big Flats Future Land Use Plan include, Residential; Planned Residential; Commercial; Industrial; Mixed Use; and Conservation.



- LEGEND**
- RESIDENTIAL
 - MIXED USE
 - COMMERCIAL / MANUFACTURING / WAREHOUSE
 - INDUSTRIAL
 - CONSERVATION
 - PLANNED RESIDENTIAL

- * ARNOT mall redevelopment planning + adaptive reuse, \$40 Mil.
- * Airport Corporate Park South development, \$1 million.
- * Airport Corporate Park North improvements, cost not yet determined.
- * Variety of new housing products (see #1), \$10-25 mil. per project
- * Support Public Private Partnerships, Cost = time from partners.
- * CCC Airport campus expansion, cost not yet determined.
- * Childcare Training + Shared Services Center, cost not yet determined.



Goals, Recommendations & Actions

Goal 4: Economic Development



“Attract and support sustainable businesses to ensure a stable tax base, meet the needs of residents, and provide quality employment opportunities.”

Current approaches to Economic Development generally utilize the term economic restructuring to signify that development involves more than attracting new business and industry. Economic restructuring strengthens the existing economic base of a community while diversifying it. Activities include helping existing businesses expand, recruiting new businesses to provide a balanced mix of commercial entities, converting unused space into productive property, and sharpening the competitiveness of the business sectors.

Industrial and retail uses are highly visible along this section of I-86, the interstate highway that is the backbone of the STC region. Properties and structures are easily accessible and developable in this project area. Many sites have infrastructure in place already. New projects to develop or re-develop in this corridor would be notable examples of success for this region. Housing and workforce training are incorporated as sub-components of this vital project.

Preserve Strategic Assets in Downtown Elmira

(asset development + retention) \$505+ Million overall project, 50-200 new jobs,

- * Elmira Area Levee Certification, \$2 million.
- * Leverage approval of the Federally Qualified Healthcare Center.
- * 299 S. Main Street adaptive reuse (former Tops Building- Southside) in the style of the "Northland Training Center", \$1.5 Million.
- * Support CCC/BOCES /IW for workforce + entrepreneurs.
- * Southside BOA Implementation (City of Elmira) \$5 Million.
- * Elmira Civic Historic District Redevelopment \$10 Million
- * Chemung County Wastewater Treat. Plant Consolidation, \$275 mil.
- * Elmira's 2nd DRI housing/Neighborhood Improvements \$10 Million.
- * Enhance Land Bank Capacity and support the Elmira Housing Partnership, *cost not yet determined*.
- * RISE zoning improvements and RISE Booth School Redevelopment/Housing Expansion, *cost not yet determined*.
- * Projects modeled after the Elmira Empire State Poverty Reduction Initiative (ESPRI) , *cost not yet determined*.
- * St. Josephs Redevelopment, \$200 Million.
- * East Water Street Rejuvenation – SR 14 to Madison Avenue \$3.4 Mill.



The Queen City is prepared for regeneration, based on the success of multiple small and large projects in the coming years. Preparations for this new phase of growth have come from years of planning and facilitation from local government and leaders in the community. Workforce training and job creating projects are in development and will be accelerated by a collaborative approach to development and leveraging resources between project partners. Housing upgrades funded by the Chemung County Land Bank (the Chemung County Property Development Corporation) are a natural complement to large-scale projects like Reynolds Way and the Mark Twain Building. The City of Elmira is focused on existing property conditions. Collaboration through public-private partnerships framework can increase the chances that transformational projects will go forward in Elmira. The City, County, and regional entities are aligned in the intent to redevelop sites in the Elmira Downtown.

Central Schuyler Strategic Investments

\$55+ Million overall project, 20 new jobs,

Central Schuyler is an area containing two villages (Watkins Glen and Montour Falls) that has the highest population density in Schuyler County. These two villages and surrounding towns are a driving force in the local economy and contribute to the region's economy through agriculture, tourism, recreation, as well as education and health & human services. Infrastructure upgrades included in this vital project are necessary to increase development opportunities. Housing and quality of life in the region are also improved by development in Central Schuyler County. New housing developments are possible in the Central Schuyler area, with access to attractive amenities and an easy commute to local employment hubs.



VILLAGE OF MONTOUR FALLS NY FORWARD PROPOSAL

"Community Building for the Next Generation"

SEPTEMBER 2022



WATKINS GLEN 20 DOWNTOWN REVITALIZATION INITIATIVE 17 Small Village, Big Potential



- * Levee – infrastructure improvements \$1.3 million.
- * Redevelopment of Shepard Niles as mixed-use housing \$40 million.
- * Marina Improvements \$4.5 million.
- * Develop new hotel in Montour Falls, cost not yet determined.
- * Village of Montour Falls Sanitary Sewer Improvements \$5.3 million.
- * Havana Glen Park Enhancements \$500,000.
- * Complete infrastructure investment package, cost not yet determined.
- * Consider housing implication of Human Service employees and clients.
- * Incorporate ARC of Schuyler transportation projects, Cost = In-kind services of existing partners.
- * Multifamily housing development in Montour Falls, Cost TBD
- * Hector new Town Hall, cost not yet determined.

Business Park: Schuyler Redevelopment

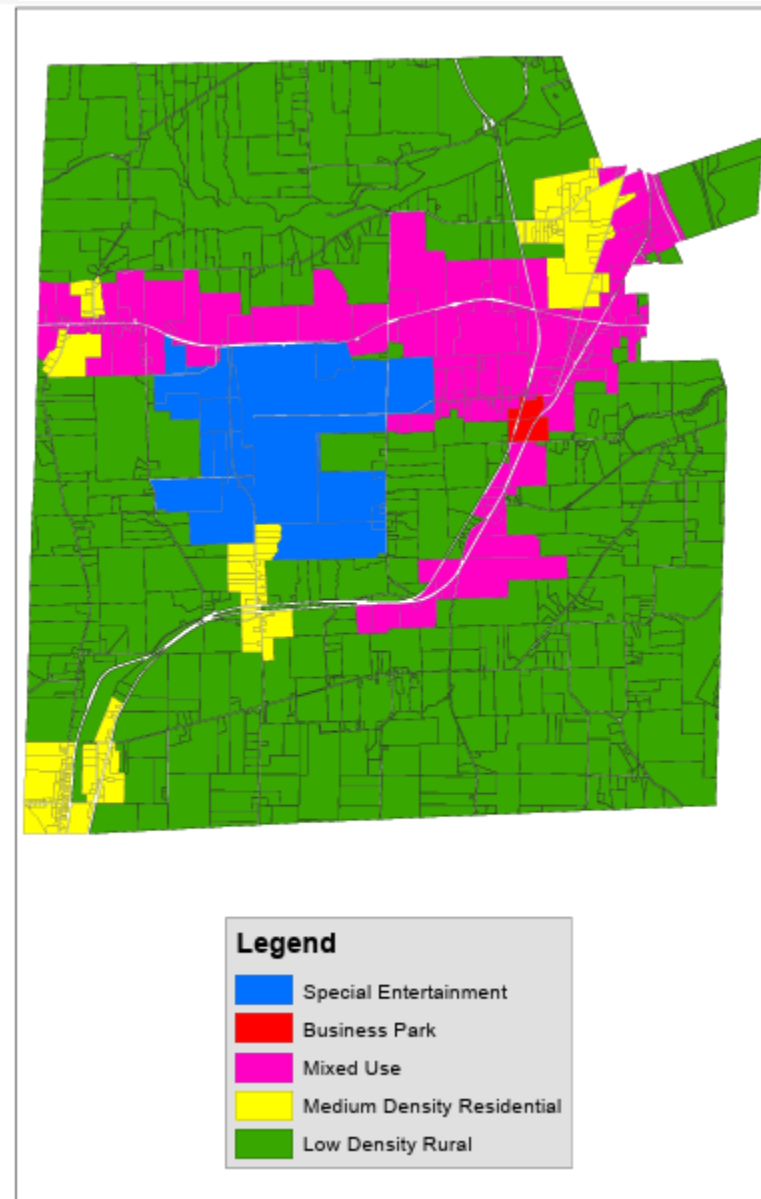
\$30+ Million overall project, 20 new jobs,

Full utilization of the Schuyler County Business Park is a top priority for the county and the region. Recently constructed modern space is limited in this region, and therefore valuable. Attracting additional employers to the site is important, attracting value-added agricultural producers to the site would generate additional benefits for the local and regional economy.

- * Attract value added agricultural production.
- * Upgrade electric, extend Road, extend utilities to ensure full use of sites, \$25 Million.
- * Work with SUNY CCC on a training center for workers "next step", cost not yet determined.
- * Incorporate ARC of Schuyler transportation projects.
- * Evaluate & plan for a "Truck Brake Check" on Rt. 414, cost not yet determined.
- * Construct a rail spur/siding to access the Business Park, \$1+ million.
- * ESS ES – Housing/Recreation/ Entertainment, cost not yet

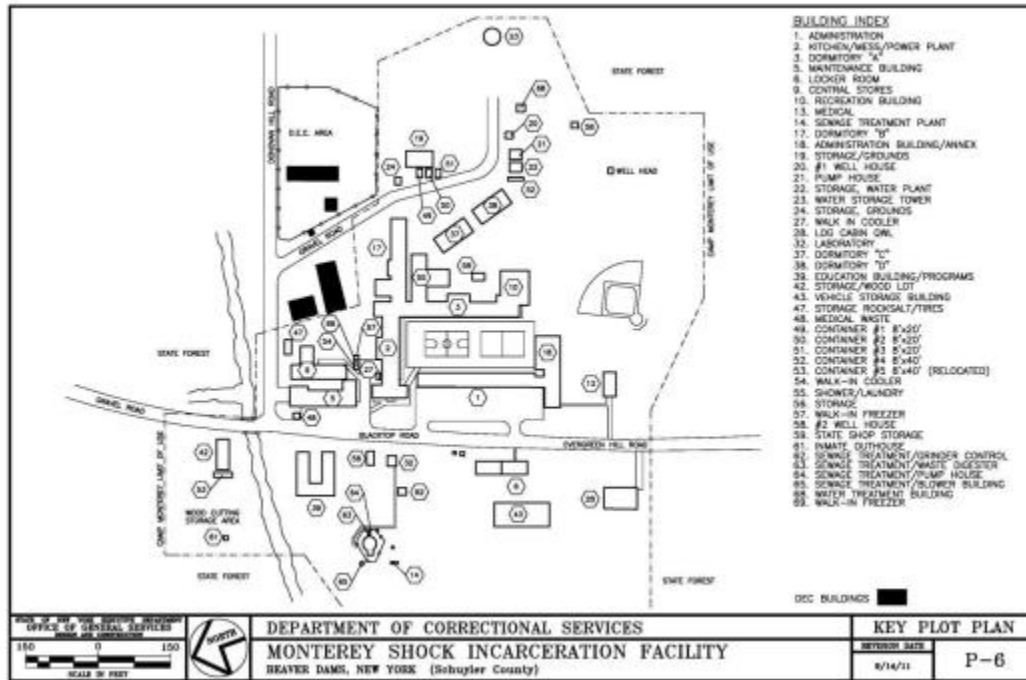


Town of Dix Zoning Map, including Business Park

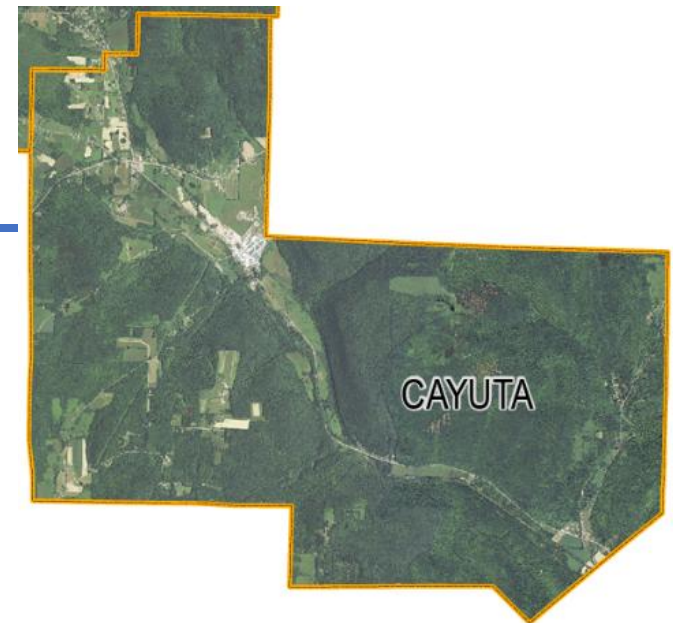


Southern Schuyler Strategic Investments

\$65-90 million overall project, 150 new jobs,



- * Redevelop Camp Monterey \$20-\$50 Million.
- * Alpine Resource Park, \$40 Million.
- * Alpine Junction investments, cost not yet determined.
- * Town of Montour infrastructure upgrades, cost TBD.
- * Incorporate ARC of Schuyler transportation projects, Cost = In-kind services of existing partners.

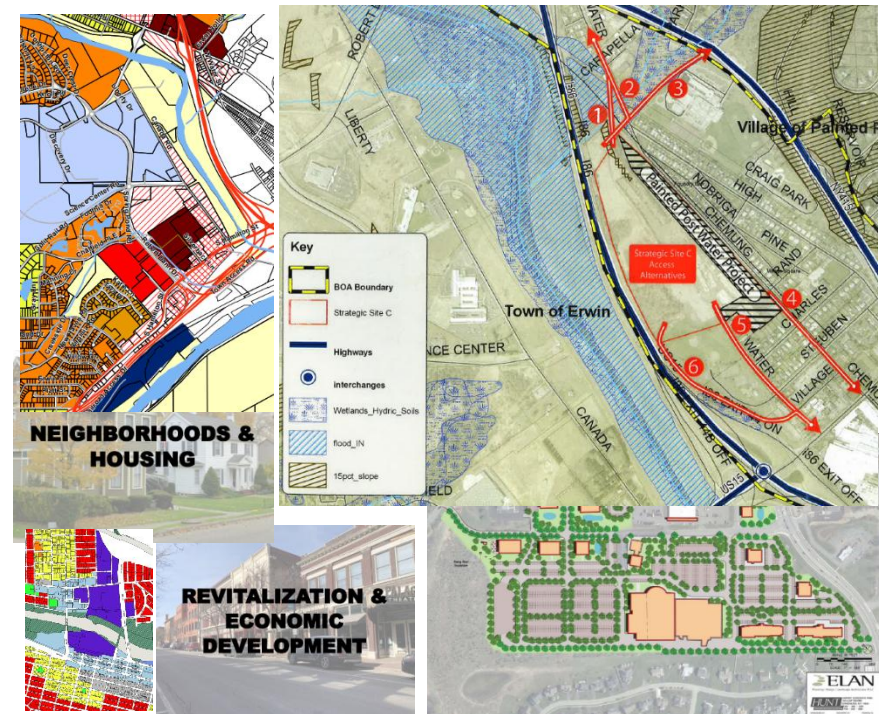


Assets and sites in southern Schuyler County can be developed based partially on demand in the surrounding counties. Specific sites in the town of Orange (adjacent to Steuben County and only 20 minutes from 'downtown Corning') and Town of Cayuta (located equidistant from Ithaca in Tompkins County and Elmira in Chemung County) should be improved as necessary to attract employers. Infrastructure on or around the sites could also benefit nearby property owners with additional development opportunities. Some infrastructure upgrades are needed to make these sites attractive, but the size, terrain, and road access are excellent features of these sites.

Corning - Erwin Strategic Investments

\$90+ Million overall project, 55 new jobs,

- * Corning Area Levee Certification \$2.6 Million.
- * Parish Heights- Redevelopment of St. Vincent's Campus, including childcare and supportive housing. (Pro-Action HeadStart Center, AIM Supportive Senior Housing) \$30 Million.
- * Support the City of Corning Comprehensive Plan, Approval and Implementation, cost not determined.
- * Corning Inc excess properties redevelopment -develop an innovation zone for flexible use of buildings, cost not determined.
- * Support and Leverage Erwin's Housing Development \$7-25 Million.
- * Development of the W. Water St. Site (former DR Foundry) \$26 Million
- * Continued Support for Ptech, and other education innovations in the community Cost = In-kind services of existing partners.
- * Leverage CCC's new Surgical Technicians and Optical Technicians programs Cost = In-kind services of existing partners.



The Corning-Erwin population center in South-East Steuben County is rich with opportunity. Several large employers and cultural centers attract people to visit from STC's three county area and beyond. Employment, recreation, healthcare treatment, k-12 education, college education, and retail opportunities exist within this area. The relatively high population density supports a variety of retail options and community services. Additional development in this area will be focused on the re-use of notable sites. Infrastructure upgrades may be necessary in some cases. Workforce training and transportation can be incorporated into site-reuse or housing plans in this area. Quality of life in the community is a recognized and appreciated asset, which can be enhanced through supporting projects in the community.

Greater Hornell Strategic Investments

\$110+ Million overall project, 100 new jobs,

PROPOSED PROJECTS

LEARNING + TRAINING CENTER



Renovation of the 1st and 2nd floors of the former Rockwell Department Store to create a learning and training center, anchored by Alfred State College.

Total Project Cost: \$ 5,000,000
DRI Funding: \$ 4,000,000

LANDMAN BUILDING



Renovation of the Landman Building to create a mixed-use development that includes commercial/retail, residential units, a rooftop terrace, and community gathering space.

Total Project Cost: \$ 3,000,000
DRI Funding: \$ 1,500,000

STREETSCAPE ENHANCEMENTS



Implementation of various streetscape enhancements along Main Street and Broadway Mall.

Total Project Cost: \$ 2,800,000
DRI Funding: \$ 2,800,000

ALLEYWAY IMPROVEMENTS



Enhancements to pedestrian alleyways to create unique and functional connections between the street, public spaces and parking areas.

Total Project Cost: \$ 1,200,000
DRI Funding: \$ 1,200,000

Hornell's long history as a rail manufacturing hub continues with this vital project. Infrastructure upgrades to the levees, industrial sites and to equipment that serves residential areas is needed to achieve this communities' vision. Partnership among organizations, governments, and employers in the greater Hornell area is generally beneficial and local organizations have expertise in many subject areas. Housing projects have been successfully implemented in Hornell, and are expected to continue based on the housing demand. Community and economic development partners in the greater Hornell area are very familiar with leveraging projects for the greatest community benefit.

- * Hornell Levee Remediation \$5+ million.
- * Hornell Levee Certification \$3.2 million.
- * Site development for growth in transit industry \$2-20 million
- * Hornell Intermunicipal Sewer Infrastructure Improvement Project (wastewater infrastructure upgrades) \$15.4 million.
- * Continue support for Hornell IDAs' Housing Projects \$2 - \$15 million
- * South Yards Industrial Park Improvements \$2 million.
- * NYS DOT - SR 36 Hornell Gateway Connection Proj. (Phase I) \$2.6 mill.
- * Church St. over Canacadea Creek bridge replacement \$2.9 million.
- * Redevelopment of St. James \$50 million.

Bath - Urbana - Hammondsport - Route 54 Corridor Redevelopment

\$35+ Million overall project, 55 new jobs,

This project is a comprehensive redevelopment of three wonderful communities at the Heart of Steuben County. This area contains many of the region's relevant land uses (Industrial, health, education, retail, transportation, utilities, recreation and tourism). Attractive areas with a tremendous array of services are available to the residents of this community and the county. This area employs a significant portion of the residents within a 20-mile commute, and has benefited from recent investments in infrastructure (utility and rail grants), tourism (Champlin Beach, Hammondsport NY Forward) and downtown improvements (NY Main Street and Bath's NY Forward grant). Collaborative actions at the State, Local, and County level involving for-profit and non-profit employers can make a substantial difference in employment, wages, housing stock, social services, and human health in this community.

- * Hammondsport-Urbana Project Implementation (NY FORWARD) \$4.5 million.
- * Village of Bath Project implementation (NY FORWARD) \$4.5 million.
- * Welcome Center at Champlin Beach \$3 million.
- * Completion of Water District, Cost not determined yet.
- * Glen Curtiss Memorial School Redevelopment \$20 million.
- * Completion of the long-awaited Rails to Trails Project \$1.5 million.
- * Implement Social Care Network Referrals (Pro-Action) in-kind?/ cost not determined.



Tub Town Brewing



Bond Box & B&B Servisoft



Carriage House Apartments



Liberty Street Mixed-Use



11-13 E William Street
Toby Swift, Corning
Real Estate

\$6,421,500	NY Forward
\$4,021,500	Leveraged Minimum Match Public & Private
\$800,000	Leveraged Private Future Committed Re-Invested

\$11,243,000 Projects Total with Continual Investment in Place



Chat-A-Whyle Restaurant



Alarius Yoga



Pulleney Place

TOTAL INVESTMENT

\$11.243M



Pulleney Park



Wayfinding

Regional Organizations that engage with the development and support of local projects: Who

The proposals outlined in the prior pages are of vital importance to the region. This section will explain "who" will play a role in facilitating collaboration around these projects and "who" will be directly involved in the development and execution of these projects. As the Economic Development District (EDD) that serves Chemung, Schuyler, and Steuben Counties, and as the author of this Comprehensive Economic Development Strategy, STC's role in advising local entities, facilitating projects, completing reports, and developing grants will be explained in this section.

In addition to its role as the EDD, STC is the Local Development District (LDD) for the Appalachian Regional Commission (ARC). STC's Economic Development Policy and Strategy Committee is intimately involved in STC's EDD and LDD decision-making activities. STC facilitates EDA and ARC grant applications, and provides additional support during the review award and reporting phases. STC staff work collaboratively in a variety of topics and staff are subject matter experts in these topics. The extensive network of STC staff connections to other organizations allows STC to provide feedback and advice throughout the development process of a project idea.

STC's staff engages closely with many local governments and county departments on issues of local concern like training needs, watershed protection, land use planning, GIS community projects, mapping, transportation planning, and housing programs. STC's GIS/mapping capacity can be used to promote smart growth in areas with complete infrastructure (public transport, high speed internet, water/sewer/electric, and housing). These activities are generally initiated by an invitation or expression of interest from the project partners and alignment with STC's core mission: to improve the capacity of local governments and nonprofits to serve the people of this community. Training activities held during the Regional Leadership Conference and during Evening Training events throughout the year are also opportunities to enhance regional understanding and collaboration. Each interaction with these local governments gives STC a firsthand view of issues that arise in the region, as well as insight into administrative challenges and potential solutions. STC is a reliable partner to discuss best practices and regional perspectives at public comprehensive planning meetings. STC's community connections are

maintained through meetings with:

- Local governments (that have STC planning assistance contracts);
- Nonprofit project partners;
- Partner Counties and Departments; and,
- the Elmira-Chemung Transportation Council.

Flooding is a fact of life in this region, and responsibly addressing the risks to current land use while guiding appropriate land use decisions is resilient economic development. Development decisions in the STC region are guided by existing floodplain regulations (by building permits and local law, based on FEMA-mapped floodplain and effective Flood Insurance Rate Maps), as well as threat of levee decertification by FEMA. A continuation of STC's comprehensive approach to guiding development and upgrades could further improve flood resilience in the region. STC has staff dedicated to flood mitigation and floodplain management; these staff meet regularly with national, state, county, and local organizations, including:

- [Association of State Floodplain Managers](#),
- [Army Corps of Engineers](#),
- [New York State Floodplain and Stormwater Managers Association](#),
- [Upper Susquehanna Coalition](#),
- [Susquehanna River Basin Commission](#),
- [Seneca Watershed Intermunicipal Organization](#),
- [New York State Department of Environmental Conservation](#),
- [New York State Division of Homeland Security and Emergency Services](#), &
- [Federal Emergency Management Agency](#).

STC's staff have been closely involved in broadband and fiber/high-speed internet deployment in the region for more than 15 years. Lately STC has had a role in educating about how state/federal broadband determinations (definitions) impact funding and potential grants. STC works on the infrastructure side of broadband by planning and grant writing for middle mile and last mile infrastructure. STC also provides support to the Southern Tier Library System and the newly created Southern Tier Digital Coalition. STC's digital mapping activities have contributed to the regions' success with grant applications for broadband and other programs between 2015-2025. For two years, STC has worked with NYS ConnectALL office to submit challenges to ISP's

Regional Organizations that engage with the development and support of local projects: Who

submitted service areas. STC's participation in broadband issues involves close relationships with: [USDA](#), [ARC](#), [EDA](#), [NTIA](#), [NYS Connect All Office](#), [Southern Tier Network](#), and Southern Tier Digital Literacy and Access Consortium.

STC's connections to the Human Services community are underpinned by Appalachian Regional Commission grant funding which was used to create many of the most impactful organizations operating in the region and through the regular Human Services meetings to promote the ARC grant cycle. This CEDS is part of an ongoing regional effort to bring a collaborative effort involving Human Service organizations into direct regional economic development processes, along with a traditional focus on grants/incentives/land use/infrastructure. This mutual approach is necessary to prepare the region's workforce and secure grant matching or programmatic resources. Following STC's success leveraging multiple sources of match/funding to benefit several large projects in the region, STC staff outreach to Human Services organizations includes promotion of collaborative grant development activities. The deepest engagement is between STC and the following:

[United Way](#), [CSS WFNY](#), [Pro Action](#), [Institute for Human Services](#), [Arbor Development](#), [Economic Opportunity Program](#), [Comprehensive Interdisciplinary Development Services \(CIDS\)](#), [Southern Tier Library System](#), [Greater Southern Tier BOCES](#), and [Corning Community College](#).

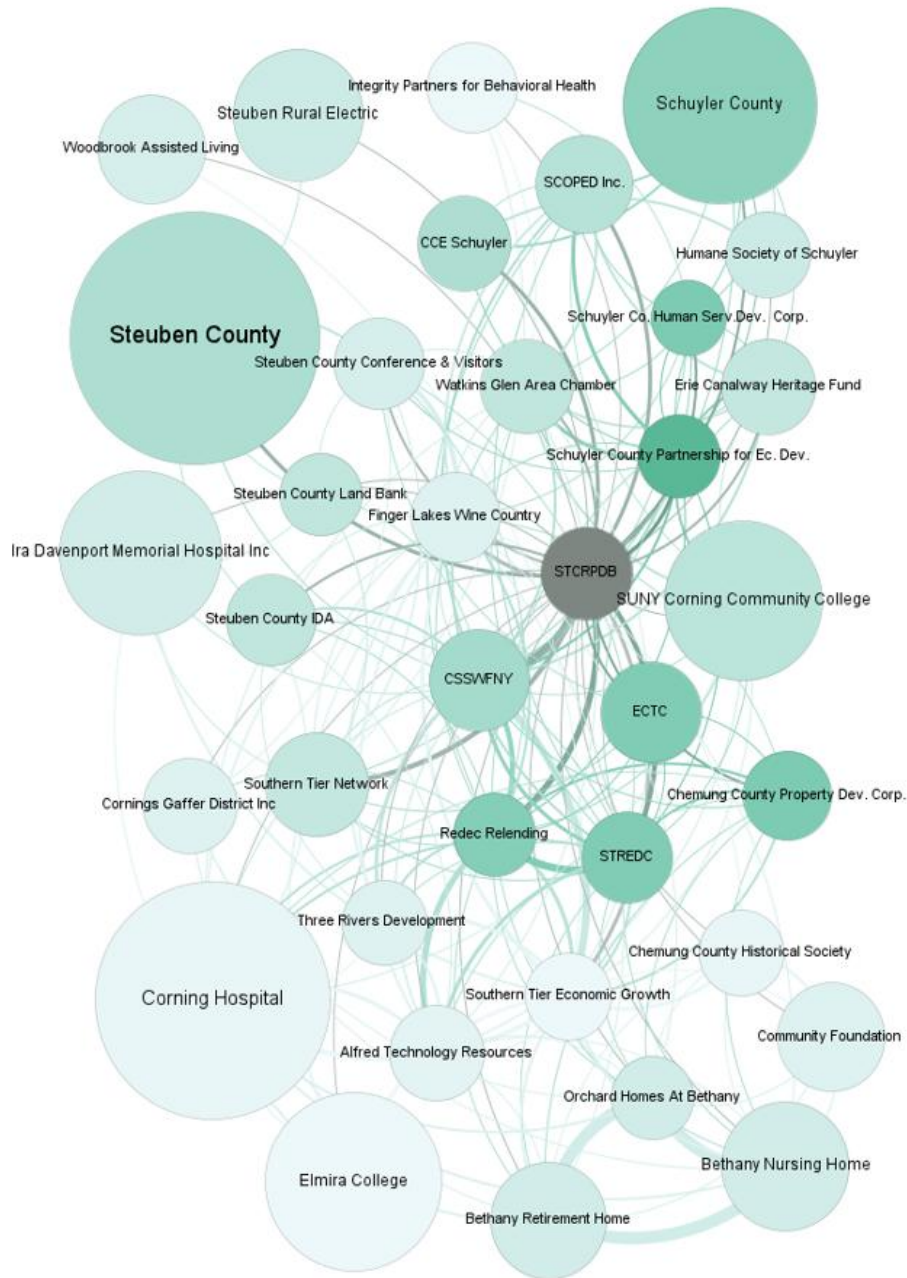
All of STC's Board Members are appointed to the STC Board to represent the interests of their County and the organization behind their appointment. STC's Board Members are qualified to assist in regional development activities through their areas of expertise: first through sharing knowledge, second through inter-organizational support (mutual aid). As this CEDS is implemented over the next 5 years, there may be greater opportunities to consider sharing resources/capacity to support important regional development projects. STC's Board Members directly represent the interests of many regionally significant organizations; these partners are fully engaged in STC's processes, through regular Board Meetings and Board actions. Board Members receive regular reports about STC's major activities: flood resilience, regional training (for governments, nonprofits and members of the public), NYS funding programs, ARC grant Cycles, EDA grants, EDPSC activities, broadband, land use planning, and more. Board Members create a direct connection through appointment

between STC and the following organizations: Steuben County, Chemung County, Schuyler County.

STC's Board Members are well connected to other significant organizations in Chemung, Schuyler, and Steuben Counties, through mutual board service. STC's Board Members typically serve on several other boards or represent a regionally significant organization, like: Chemung Schuyler Steuben Workforce Development Inc, Southern Tier Network, Southern Tier Economic Growth Inc, Woodbrook Assisted Living Residence inc., Ira davenport Hospital, Integrity Partners for behavioral health, Chemung County Property Development Corporation, Scoped Inc, Watkins Glen Area Chamber Of Commerce Inc, Erie Canalway Heritage Fund Inc, Schuyler County Human Services Development Corporation, Corning intown District Management Association, Cornings Gaffer District Inc, Market Street Restoration Corporation, Bethany Nursing Home And Health Related Facility Inc, Bethany Retirement Home Inc, Orchard Homes At Bethany Village Inc., Nysarc Inc — Chemung Schuyler Counties Chapter, Chemung County Historical Society Inc, Humane Society Of Schuyler County, Arnot Ogden Medical Center Foundation Inc., Elmira College, Redec Relending Corporation, Regional Economic Development & Energy Corporation, Locate Finger Lakes Inc., Steuben Rural Electric Cooperative Inc., Boy Scouts Of America — 375 Five Rivers Council, Corning Hospital, Alfred Technology Resources Inc., Corning Community College Development Foundation Inc, Community Foundation Of Elmira Corning And The Finger Lakes, Hornell Partners For Growth Inc, Steuben County Conference And Visitors Bureau Inc., Hornell Industrial Development Corporation.

Greater collaboration opportunities can be cultivated by creating beneficial opportunities for discussion, and building 'buy-in' from relevant regional entities. Whenever organizations and staff are asked to partner in a new way, some growing pains are possible where collaboration opportunities are viewed as disputes.

Local and Regional Boards that share members with STC's 2025 Board of Directors (data collected from recent tax filings)
 Circle size indicates the budget size, color shows the percentage of board members shared with STC's Board, and lines indicate any shared board members.



- Alfred Technology Resources Inc
- Bethany Nursing Home And Health Related Facility Inc
- Bethany Retirement Home Inc
- CCE Schuyler
- Chemung County Historical Society Inc
- Chemung County Property Development Corporation
- Community Foundation Of Elmira Corning And The Finger Lakes
- Corning Hospital
- Corning's Gaffer District Inc
- CSSWFNY
- ECTC
- Elmira College
- Erie Canalway Heritage Fund
- Finger Lakes Wine Country Tourism Marketing Association Inc
- Humane Society Of Schuyler County
- Integrity Partners for behavioral health
- Ira Davenport Memorial Hospital Inc
- Market Street Restoration Corporation
- Orchard Homes At Bethany Village Inc
- Redec Relending Corporation
- Schuyler County Human Services Development Corporation
- Schuyler County Legislature
- Schuyler County Partnership for Economic Development
- SCOPED Inc.
- Southern Tier Economic Growth
- Southern Tier Network
- Steuben County
- Steuben County Conference And Visitors Bureau Inc
- Steuben County IDA
- Steuben Rural Electric Cooperative Inc
- STREDC
- SUNY Corning Community College
- Three Rivers Development Corporation
- Watkins Glen Area Chamber Of Commerce Inc
- Woodbrook Assisted Living Residence inc.

Timelines for Project Support and Engagement: when

The 5- year timeline for the 2025- 2030 Comprehensive Economic Development Strategy is based on good planning practices, project development timelines, EDA regulations, and grant application cycles. The first activities undertaken after the adoption of STC's 2025 CEDS will be continued development of projects already in process. The recent regional successes of [Twin Tiers ARISE Program, 604b, resilience planning, & Community GIS], will be leveraged into additional project successes with CEDS aligned projects. Finally, STC intends that the CEDS Collaborative process will guide the development of new projects specifically to achieve transformational regional successes.

Much of the upcoming development activity is rooted in the success of previous planning efforts, local infrastructure upgrades, and regional collaboration activities that have taken place across the region for the last 20 years. Positive developments in the next 5 years wouldn't be possible without the dedicated efforts of our regions' leading organizations, as well as the funding support from our county governments, state government, and federal agencies. For example, rail upgrades in Steuben have been a long- term focus of the Steuben County IDA, with multiple grants funding substantial infrastructure improvements to the rail system, which are now bearing fruit in the form of business investment and employment opportunities on sites with rail access. Chemung County led the nation in deploying ARC highway access funds through an \$18 million grant to develop the Horseheads Connector Road, which is now a vital access point for \$60 million in investment from Siemens and Southern Tier Logistics. Schuyler County's overwhelming success

implementing Project Seneca (a place-based redevelopment approach that inspired this CEDS' vital project list) into a \$10 million Downtown Revitalization Initiative (DRI) has positively reframed the possibilities of leveraged investments and place-based development. Hornell IDA's collaborative work with Alfred State to access millions in federal grants is truly inspirational; for training and placement of 300 highly skilled welders to serve high tech manufacturing industries. This CEDS has set out 12 projects and 9 activities that will be supported by STC's staff, Board, and community partners over the next 5 years. The STC Board and EDPSC agree the project list will continue to be updated annually; a process that supports information sharing and outreach between the regions' development organizations.

Partners working together to strategize the grant's scope and timeline as part of a regional effort can multiply the impact of grant awards to a project by increasing the grant-funded budget or by funding other efforts aligned toward the same goal. Specific project timelines are included in the 12 vital overarching efforts and the project list (appendix 1). Considering the timelines for these grant applications are important, because many of these grant funds can be leveraged as match to further improve the project or to support other grant applications for the overall 'project constellation'. These project timelines are based on pre-development work, leading to implementation and/or construction; before achieving an increase in employment. The importance of discussing grant-application deadlines and funding time frames has been incorporated into the Comprehensive Economic Development Strategy through recommended actions 2, 3, 6, and 7.

Summary Background of Regional Conditions: Where

The region's economy functions with moderate efficiency to deliver goods and services to the 190,087 residents of this three-county area. This region has been classified by the Appalachian Regional Commission as [transitional](#); this area hasn't achieved economic parity with the Nation. This Region shows impacts of poverty, poor health, and limited economic capacity. Rural and urban poverty occurs in the STC region; 15.6 % of people in the region are in poverty vs. the 14.2% poverty rate in New York State. Poverty in the STC region is higher than the Appalachian Poverty rate of 14.5% and higher than the 12.5% National poverty rate. Census tracts within the region are classified as [distressed by the EDA](#). The region's residents are primarily white (89%). African-Americans are 3.3% of the population, individuals of two or more races are 2.5% of the population, Hispanic individuals are about 2.7% of the population and Asian individuals are 1.4% of the region's population.

The weather of this region is Dfb: warm summer, no rainy season, continental as classified by the [Köppen classification](#). For agricultural purposes, this area is prone to freeze between October and May; located almost entirely in [USDA zone](#) 5b and 6a, small portions of land adjacent to the Finger Lakes are classified as 6b. Cloud coverage is notable. Regular precipitation and cloud cover support the region's forests, pastures, and field crops. This community is not prone to frequent droughts and municipal water is sourced from underground aquifers. Terrain and riverine water resources shaped historical development in these communities. Agricultural land uses like field crops and pasture lands occur on gently sloping or flat terrain outside the urban areas. Steep slopes are generally left to forestry uses (open space, timberland, and hunting acreage). High intensity urban development is concentrated in the flat-lands adjacent to the rivers; these flat lands are historic floodplains. Flood control structures

as a complement the [STC CEDS StoryMap](#)

(local levees and regional structures like Cowanesque Dam in Pennsylvania) protect a significant portion of the region's residents from river-based flooding. The location, condition, and height of these structures is an ongoing topic of significant importance to the region. [STC's staff work](#) with local, State, and federal government to raise awareness of the risks of levee de-certification and to develop a long-term strategy to rectify the issues raised by FEMA.

Six types of infrastructure are common throughout the Region: road, rail, electric, water, sewer, and internet. The entire area is covered by electric infrastructure following rural electrification in 1940's and the development of Steuben Rural Electric (which now serves parts of Western NY as well). Although the condition of electrical infrastructure has deteriorated, or in some cases not been improved to meet increased demand. Electric grid constraints are a major regional concern highlighted in this CEDS. State or Federal highway infrastructure serves the entire region; every part of the region is within a 40-minute drive of an Interstate highway. Highways receive routine maintenance, although some culverts are at risk of deterioration. Rail lines cross our region and rail access to developable sites is possible. Water infrastructure (Water/Sewer systems) are prevalent in urbanized areas, and generally absent in the rural areas. High-speed internet is generally available throughout the region; unfortunately, there are rural areas that do not have reliable fiber broadband access and approximately 25% of the region is served by only one internet service provider (ISP) allowing for little competition in the broadband market and generally higher cost of services.

Summary Background of Regional Conditions: Where

From a total population of approximately 190,000, the region's workforce is approximately 80,000 people and workforce participation is poor. The U.S. workforce participation rate is 62.4% in Jan 2025 according to the St. Louis Fed, 61.2% for NY state, and only 54.3% for the STC region. Poor workforce participation has been identified by regional partners for more than eight years and was studied in detail in the 2018 workforce study from Three Rivers Development and STC's 2021 workforce study funded by the CARES Act. The workforce could be increased by attracting a percentage of the region's 69,409 residents who are 16 or older and not participating in the labor force. Increases in participation will require increasing the attractiveness of employment, or offering stability to new workers in uncertain times. Workforce increases due to attraction of workers from outside the three-county area is possible if housing stock improves or if housing availability increases.

Regional educational attainment is near average for the US and Appalachia. Educational attainment in this region is comparable with other Rural NY communities: High School graduation attainment is 2-3% higher than NYS average (92.4% for Chemung, 90.8% for Schuyler, and 92% for Steuben, vs. 89.8% for NYS), with lower rates of attainment for Bachelors, Masters, or PHD degrees. Higher education options in/near the area are available through Elmira College, Binghamton University, Cornell University, Ithaca College, and Keuka College. However, due to the small population and workforce size specific educational attainments necessary for employment like advanced degrees and specific skills are often recruited from outside.

Regional industry is led by government employment (far exceeding the national average for communities of this size). Followed by health care and social assistance which is slightly above the national average for a community of 190,000 people. Manufacturing is the

as a complement the [STC CEDS StoryMap](#)

region's third largest employer, and this industry is very strong in the STC region, approximately nearly double the national average for a community this size. Retail employment is slightly higher than the national average, due in part to the region's proximity to the Northern Tier of PA (residents from outside the region routinely shop in the STC region, as there are no equivalent 'mall style' retail offerings in the adjacent PA counties). The STC region has lower than average employment in most of the other industries, except Ag. (although agriculture remains a small part of the region's employment mix.

Specific clusters of note include rail manufacturing, glass and fiber optics, as well as high tech manufacturing, agricultural products, and value added agricultural products. Clusters expected to decline over the next 20 years include education, other services and retail. Growth in the next 20 years is expected in agriculture, transportation and warehousing, resource extraction, information, accommodation and food service.

Elmira Corning, Bath, Watkins Glen, Montour Falls, and Big Flats were induced to grow because of natural resource extraction, agriculture, and the manufacturing economy. Historic manufacturing employment induced development in the region's cities and villages. The long-term effects of this historical development is a legacy of industrial sites with potential for redevelopment embedded within established communities with infrastructure. Future impacts of manufacturing industries in the area include continued investment by wealth creating industries in the area, reuse of existing sites for appropriate new development in manufacturing, and continuation of a local culture of manufacturing. Agriculture impacted the landscape with widespread clear cutting and hay farming in the 1800's and 1900's, followed by dairy and crop farming. The agricultural declines

Summary Background of Regional Conditions: Where

from 1900-through 2000 did stabilize, although there have been small changes in recent years, those changes are consistent with national trends. Present impacts of past agricultural clusters include: the longest running agricultural fair in the US, the Steuben County Fair, many existing farms, as well as perennial plantings like vineyards, orchards and berry farms that are still in production. Future impacts of the agricultural cluster are generally positive: continued investment in agricultural land uses, growth of the dairy industry specifically to meet customer demand, soil improvement, youth-community retention, increased regional GDP, and value-added production in dairy and innovative crops.

Factors affecting regional economic performance include: grid capacity, childcare, low workforce participation, mismatch between in-demand skills and the education system, and housing constraints. New York State laws and regulations increase operating costs for employees, employers and residents of the area. The transportation system is approximately adequate, with thorough coverage of Interstate highways, state roadways, county roadways and local roads, in addition to several airports. Rail lines, but public transportation improvements could lower costs for working people. Energy costs are high and rising. Taxes in New York State are high and rising. The issues of taxes and energy costs, as well as regulation, have been addressed in detail in STC's prior CEDS from 2012 to 2024. Thus, the abbreviated commentary here. Land use patterns are appropriate for the community and STC is working to improve emergency preparedness risks that are linked to land use.

The region has generally low population density, high quality of life, and strong outdoor recreation opportunities. The community is generally safe, with crime rates at or below national trends. Resources are present in the community, and generally available to

as a complement the [STC CEDS StoryMap](#)

residents and visitors. The Southern Tier Central region is an important part of the New York State economy, generating approximately \$12.1 billion annually toward the NYS GDP of \$2.2 trillion. Regional manufacturing supply chains link broadly throughout the NYS economy. The region's manufacturing base is higher than the New York average, and agriculture is also above the New York average. The region continues to generate global exports.

Strengths	Weaknesses
<p>Adequate water resources in the region. Clean air. Low risk of natural disaster. Manufacturing population. Higher quality of life (including recreation). Low cost of living relative to some other communities.</p>	<p>NYS regulatory environment. NYS taxation environment. Housing stock limitations. Disengaged workforce. Electrical infrastructure. Transportation options. Declining working-age population.</p>
Opportunities	Threats
<p>Collaboration and Leveraged Resources Available land Transportation manufacturing cluster (traditional and innovative) Advanced technology research and development (spinoff companies- and implementation of new tech.)</p>	<p>Unmotivated property owners (especially corporate and out-of-state buyers). Flood risks, specifically to ag. and cropland. Aging infrastructure and replacement cost. Uncertainty around funding programs Demographic change (aging pop., & avail./cost of elder care).</p>

Community Participation, regional Stakeholders, and Public Comment

STC BOARD

Chair, Jack Wheeler, Steuben County Manager
Vice Chair, Shawn Rosno, Schuyler County Administrator
Jennifer Furman, Chemung Deputy County Executive
P. Michael Collins, City Manager for the City of Elmira
Kelly Fitzpatrick, Steuben County Legislature Chair
Carl Blowers, Schuyler County Legislature Chair
John Buckley, Mayor of the City of Hornell (represented by Heather Reynolds)
Marie Myers Shearing, Steuben County Planning Director
Joann Lindstrom, Schuyler County Planning Director
Kevin Meindl, Chemung County Planning / ECTC Director
Jenn Miller, City of Corning Planning Director
James Ryan, Mayor of the Village of Montour Falls
Aaron Dowd, Chemung County IT Director
Anita Lewis, Community Impact Rep.
Chad Hendrickson, Natural resources Rep.
Ernest Hartman, Labor Rep.
Tom Hauryski, Agricultural Rep.
Judith Rowe, Small Business Rep.
James Johnson, Steuben County IDA, Commerce & Business Rep.
Joseph Roman, Chemung County IDA, Industrial Rep.
James Kuhl, Steuben County Legislature
Robert Nichols, Steuben County Legislature
Mark Rondinaro, Schuyler County Legislature
Judy McKinney Cherry, Schuyler County Member At-Large
G. Thomas Tranter, Chemung County Member At-Large

Economic Development Policy and Strategy Committee

BOARD APPOINTMENTS:

Carl Blowers, Private Sector
Ernest Hartman, Labor Representative
Chad Hendrickson, Environmental Representative
James Kuhl, Public Official
Jennifer Miller, Public official
Shawn Rosno, Public official
Jack Wheeler, Public Official

OTHER APPOINTMENTS:

Judy McKinney Cherry, Schuyler – SCOPED Agencies
Michal Nisbet, Hornell IDA
James Johnson, Steuben IDA
Jill Koski, Chemung, STEG
Joseph Roman, Chemung IDA
Kevin Meindl, Chemung
Marie Myers Shearing, Steuben
Joann Lindstrom, Schuyler
CSS Workforce Development, Phyllis Balliett
Local Government Bill Boland, City of Corning Elected Official
Mark Rondinaro, Town of Redding
Mark Rykman, City of Corning Manager
REDEC, George Miner
Three Rivers, Kamala Keeley
Corning Community College, Dr. William Mullaney
Childcare Representative, Margie Lawlor

The public comment period for this CEDS began on Sunday February 2nd, 2025 with a legal ad (online and print) posting in the The-Leader, the paper of record for STC. The legal notice also ran on Feb. 3rd, 20th, March 2nd and ran for the last time on March 3rd. STC's CEDS webpage referenced in the legal ad includes the CEDS draft narrative, draft project list, link to the draft Storymap, and a comment form for the public. STC also shared the CEDS website link with the public through LinkedIn, and an email campaign, starting on February 3rd. STC received 3 comments through the online form, 13 people attended in-person meetings, STC staff received 12 emails about the CEDS with comments addressing the focus, tone, and suggesting additional projects be added to the lists. The Committee met on 3/7/25 to incorporate these suggestions into the CEDS to the greatest extent practicable. STC Board voted virtually in March 2025 to approve the CEDS.

[STC's 2016 CEDS](#), [STC's 2020 CEDS](#),
[2022-2026 HUD Strategic Plan](#), [NYS Consolidated Plan for HUD 2023](#),
[Appalachian Envisioned: ARC's 2022-2026 Strategic Plan](#), [NYS 2023 ARC Strategy Statement](#),
[New York State Hazard Mitigation Plan 2023](#),
[Chemung County 2019 Hazard Mitigation Plan](#), [Schuyler County Hazard Mitigation Plan 2021-2026](#), [Steuben County Hazard Mitigation Plan 2019](#),
[NYS Digital Broadband Plan 2024](#),
[Southern Tier Regional Economic Development Council 2023 Strategic Plan](#),
[ECTC Unified Planning Work program 2024-2025](#), [ECTC 2040 Long Range Transportation Plan](#),
[Statewide transportation plan](#),
[NY Smart Growth Law](#), [NYS C. Leadership and Community Protection Act CLCPA](#), [C G Southern Tier \(2012\)](#)
[NY Grid Study](#), [NYSEG 2023 Upstate NY Grid Plan](#),
[Chemung County Comprehensive Plan is underway](#), [Comprehensive Plans in Chemung County Communities](#),
[Schuyler County Comprehensive Plan](#), [Comprehensive Plans in Schuyler County Communities](#),
[Steuben County Comprehensive Plan](#), [City of Corning Smart Growth Comprehensive Plan \(in development\)](#), [Steuben Co. planning assistance](#),
[Steuben County GIS Dashboard](#),
[NYS Solid Waste Management Plan NY](#), [Chemung Co. Solid Waste Management Plan](#), [Steuben Co. Solid Waste Management Plan](#),
[NYS Ed. Blue Ribbon Commission on Graduation Measures](#),
[Chemung Schuyler Steuben Workforce Development Area Local Plan](#), [CSSWFNY System Operational Plan](#),
[New York Statewide Plan for Higher Education](#),
[NYS DOL Apprenticeship website](#) ,
[NYS parks + outdoor recreation plans](#) ([Chemung County Parks and Rec.](#), [Schuyler County Parks and Rec.](#), [Steuben County Parks and Rec.](#))
[STC's Regional Recovery + Resilience Plan](#), [Supply Chain Analysis](#), [Workforce Analysis](#), [Childcare Analysis](#), [Commercial/ Retail Analysis](#), [Industrial Real Estate Analysis](#), [Residential Housing Analysis](#),
2022 Census of Agriculture for [Chemung County](#), [Schuyler County](#), [Steuben County](#) and [New York State](#)
Census Reporter for [Chemung County](#), [Schuyler County](#), [Steuben County](#),
Census Profile for [Chemung County](#), [Schuyler County](#), [Steuben County](#), [New York State](#)

Project Name	Address/ location	Price	Jobs	Project Type	Timeline Start- End	roadblocks?	Sponsor/ Applicant	Partner Agencies	Detailed Project Description
Regional									
Redevelopment of Corning Inc. Excess Properties	Corning/Erwin/Big Flats	\$50 Million		Economic Development	Ongoing	Levee accreditation, possible flood risk	County Economic Development	Multiple	The effort will include repurposing vacant buildings Corning has deemed as excess properties.
Chemung River Trail	Chemung/Steuben	\$102 million			Q3 2025-ongoing		Three Rivers	multiple	Implementation of the Chemung River Trail plan as developed by the 2025 completed feasibility study. Elmira, Corning, Erwin and many communities in-between.
Energy Independant Southern Tier	Chemung/Steuben/Schuylers	\$200,000			Q1 2025-Q4 2026		Three Rivers	multiple	
Child Care Shared Services & Training Center	Chemung/Steuben/Schuylers	\$2,186,350		Human Development	2025-2027		Pro Action	Child Care Center Members	This would include the renovation of a building and 2 years of start up expenses for a Child Care Shared Services organization and Training Center. Sustainability after 2 years would come from Child Care Center members paying into the service and possibly some grant funding.
Creation of a remote support center to offer supportive technology	Chemung- Schuylers	\$500,000		Human Development					to offer supportive technology community living to people who need support
2023-2025 Development of regional energy independence	Muti County	\$1 Billion	30	Economic Development	Ongoing		Multiple	Multiple	
2026-2033 Development of regional energy independence	Multi County	\$500 million	20	Economic Development	Ongoing		Multiple	Multiple	
Continued Implementation of the Twin Tiers ARISE Program	Regional- Southern Tier of NY and Northern Tier of PA	\$3 million	300	Human Development	2023 - 2028	Funding limitations	Northern Tier RPDC	STC, CCC, CSSWFNY, CDC, GST BOCES	The remaining 3 years of a project designed to increase youth-workforce collaboration in the twin Tiers.
Foreman and manager training for CTE graduates and Skilled tradespeople	Regional - Chemung, Schuylers, Steuben		20	Human Development	2025-2030	Funding, Partnerships			Offer managerial and business training to skilled workers who could be promoted to Forman/Manger or start their own companies.
Implementation of the ARC/ STC grants to Grow project	Regional - Chemung, Schuylers, Steuben			Human Development	2025-2027				Collaborate with other funders to identify projects that encourage resilience and collaboration between Regional organizations.
Southern Tier Broadband Coalition (STBC) & STN Broadband Phased Build out	Regional - Chemung, Schuylers, Steuben	160000000	800	Human Development		Funding, ROW Access, basic agency	STN		Bring fiber optic broadband to unserved areas of the STC region.
Clean Tech Business Development Strategy	Multi County			Economic Development	Ongoing	Development of implementation structure	8 County IDAs in the Southern Tier	Multiple	To identify and position the region for significant private sector investment in next generation technologies in clean tech manufacturing, clean energy production and supply chain opportunities in this field.
South Perry Rebuild	Regional Steuben + more			Place Based Development	2023-2028		Avangrid / NYSEG		(1) Add a second 115/34.5kV equipment (2) 115 kV bus rebuild as BAAH (3) 34 kV bus expansion with tie breaker

Project Name	Address/ location	Price	Jobs	Project Type	Timeline Start- End	roadblocks?	Sponsor/ Applicant	Partner Agencies	Detailed Project Description
Meyer New 2 nd 115/34.5kV equ	Regional Steuben + more			Place Based Development	2023-2028		Avangrid / NYSEG		1) New 230/115 kV equipment (2) Add a second 115/34.5kV equipment (3) 115 kV bus rebuild as BAAH (4) 34 kV bus expansion with tie breaker
Bath Rebuild	Regional			Place Based Development	2023-2028		Avangrid / NYSEG,	NYS CLCPA	Full rebuild of substation as 115 kV three-bay breaker-and-a-half (BAAH) air insulated substation (AIS) with two (2) new 115/34.5 kV 50 MVA equipment, a +150/-150 MVAR dynamic VAR compensation unit (STATCOM or SVC)
Montour Falls Rebuild	Regional			Place Based Development	2023-2028		Avangrid / NYSEG,	NYS CLCPA	Full rebuild as a four-bay BAAH AIS, two (2) new 115/34.5 kV 50 MVA equipment, two (2) new 115 kV 30 MVAR capacitor banks. Additional distribution upgrades
Hillside Upgrades	Regional			Place Based Development	2023-2026		Avangrid / NYSEG,	NYS CLCPA	Re-route the 115 kV lines to new 115 kV station at Watercure, replace two 230 kV breakers, separating the 34.5 kV breaker positions of Bank 3 and 4.
Watercure Expansion	Regional			Place Based Development	2023-2028		Avangrid / NYSEG,	NYS CLCPA	expand the 345 kV two-bay BAAH with one (1) empty bay position, adding a three bay 115 kV BAAH. Reroute 115 kV lines to new 115 kV BAAH, Add one (1) new 345/115 kV three winding 448 MVA equipment.
Line 978 Rebuild (Montour - Hillside)	Regional			Place Based Development	2023-2030		Avangrid / NYSEG,	NYS CLCPA	Rebuild the existing 16-mile double circuit line with 1192 ACSR from Montour Falls to Ridge Road and from Ridge Road to Hillside.
Line 965 (Bath - Montour Falls)	Regional			Place Based Development	2023-2030		Avangrid / NYSEG,	NYS CLCPA	Rebuild the existing 22-mile 115 kV line with bundled 795 Drake ACSR conductor
Line 723 (Bath - Spencer Hill)	Regional			Place Based Development	2023-2030		Avangrid / NYSEG,	NYS CLCPA	Rebuild the existing 15-mile 115 kV line with bundled 795 Drake ACSR conductor.
Line 935 (Hickling - Caton)	Regional			Place Based Development	2023-2027		Avangrid / NYSEG,	NYS CLCPA	Rebuild the existing 9-mile 115 kV line with 2156 Bluebird ACSR conductor.
Line 68 (Canandaigua - Stoney Ridge)	Regional			Place Based Development	2023-2030		Avangrid / NYSEG,	NYS CLCPA	Rebuild the existing 24-mile 230 kV line with bundled 1192 Bunting ACSR conductor.
Line 69 (Hillside - Watercure)	Regional			Place Based Development	2023-2030		Avangrid / NYSEG,	NYS CLCPA	Rebuild the existing 1-mile 230 kV line with 2156 Bluebird ACSR conductor.
Line 72 (Stoney Ridge - Hillside)	Regional			Place Based Development	2023-2030		Avangrid / NYSEG,	NYS CLCPA	Rebuild the existing 27-mile 230 kV line with 2156 Bluebird ACSR conductor.

Project Name	Address/ location	Price	Jobs	Project Type	Timeline Start- End	roadblocks?	Sponsor/ Applicant	Partner Agencies	Detailed Project Description
Line 712 (Sullivan Pk - Stoney Ridge)	Regional			Place Based Development	2023-2027		Avangrid / NYSEG,	NYS CLCPA	Rebuild the existing 6-mile 115 kV line with 2156 Bluebird ACSR conductor.
Hickling Rebuild (substation)	Regional			Place Based Development	2023-2028		Avangrid / NYSEG,	NYS CLCPA	Full rebuild of the substation as a 115 kV four-bay BAAH AIS design, two (2) new 115/34.5 kV 50 MVA equipment. Additional distribution upgrades
Bennett Rebuild	Regional Steuben + more			Place Based Development	2023-2028		Avangrid / NYSEG,	NYS CLCPA	Partial rebuild with 115kV bus expansion, and terminal work on L725
Eelpot Expansion	Regional Steuben + more			Place Based Development	2023-2027		Avangrid / NYSEG,	NYS CLCPA	Addition of a new 115 kV circuit breaker, a +100/-100 MVAR new dynamic VAR
Line 932 (Bennett - Andover)	Regional Steuben + more			Place Based Development	2023-2030		Avangrid / NYSEG,	NYS CLCPA	Install a electric Flow Control Device at Bennett Substation and perform in-kind structure replacements where required to address all asset condition issues.
Line 953 (Bennett - Spencer Hill)	Regional Steuben + more			Place Based Development	2023-2027		Avangrid / NYSEG,	NYS CLCPA	Rebuild the existing 5-mile 115 kV line with 2156 Bluebird ACSR conductor.
Line 722 Rebuild (Eel Pot - Flat Street)	Regional Steuben + more			Place Based Development	2023-2030		Avangrid / NYSEG,	NYS CLCPA	Rebuild the existing 23-mile 115 kV line with 1590 Falcon ACSR conductor.
Line 724 Rebuild (Meyer - Eel Pot)	Regional Steuben + more			Place Based Development	2023-2030		Avangrid / NYSEG,	NYS CLCPA	Rebuild the existing 15-mile 115 kV line with 1590 Falcon ACSR conductor.
Line 968 Rebuild (Flat Street - Greenidge)	Regional Steuben + more			Place Based Development	2023-2027		Avangrid / NYSEG,	NYS CLCPA	Rebuild the existing 5-mile 115 kV line with 1590 Falcon ACSR conductor.
Line 963 Rebuild (Montour Falls - Hillside)	Regional Steuben + more			Place Based Development	2023-2030		Avangrid / NYSEG,	NYS CLCPA	Rebuild the existing 16-mile double circuit line with 1590 Falcon ACSR.
Line 67 Rebuild (Stolle Rd - High Sheldon)	Regional Steuben + more			Place Based Development	2023-2030		Avangrid / NYSEG,	NYS CLCPA	Rebuild the existing 11-mile 230 kV line with bundled 1192 Bunting ACSR conductor on an offset with steel monopole structures.
Line 906 Rebuild (Station 82 - Station 128)	Regional Steuben + more			Place Based Development	2023-2030		Avangrid / NYSEG,	NYS CLCPA	Rebuild the existing 30-mile 115 kV line with 1590 Falcon ACSR conductor on an offset with light duty steel monopole structures.
Line 934 Rebuild (South Perry - Meyer)	Regional- Steuben +			Place Based Development	2023-2030		Avangrid / NYSEG,	NYS CLCPA	Rebuild the existing 19-mile 115 kV line with 795 Drake ACSR conductor on an offset with light duty steel monopole structures

Project Name	Address/ location	Price	Jobs	Project Type	Timeline Start- End	roadblocks?	Sponsor/ Applicant	Partner Agencies	Detailed Project Description
Creation of a new adult-workforce integration project	Regional - Southern Tier of NY and Northern Tier of PA	\$5,000,000	300	Human Development	2026-2030				
Chemung County									
Norfolk Southern/B&H interchange track		\$1 million		Place Based Development		Levee accreditation			
Chemung South Business Park	Chemung	\$2,000,000	20	Economic Development		Wetland	Chemung County		
Bulkhead Area Redevelopment	Chemung	\$2,500,000	25	Economic Development		Levee accreditation	Chemung County		
Forestry Manager Program	Chemung	\$100,000	1	Place Based Development	2026-2028	Funding to start-up the program	Town of Elmira Tree Board	EUGE	Chemung County CCE, Chemung County Emergency preparedness Enhance street tree varieties, prune existing trees, identify hazardous trees, plant trees
Development of a new home on Hoffman Road	Chemung	\$750,000	20	Human Development					
I-86 Alternative Fuel Corridor Project	Chemung	500,000		Economic Development			Chemung County		
Chemung Co. Brownfields Redevelopment	Chemung	1,000,000	10	Economic Development		Possible flood risk, levee accreditation	Chemung County		
NYSERDA Energy Hub - Workforce Development	425 Pennsylvania Ave Suite 107 Elmira NY 14904	Unk	1	Human Development	Fall 2025	Match funding	CCE Tompkins Co	CCE Chemung, TBD	Workforce development training of 6-12 individuals per session, 2-3 sessions per year, (6 weeks in class, paid training, and looking to do some paid work to apprenticeship time). Will need training site, student trainees nominees, trainer/program coordinator, sponsors for trainee kits, sponsors for classes, work sites.
Southern Tier Rideshare	Chemung						Chemung County		
Autonomous and Connected Vehicle Infrastructure	Chemung						Chemung County		
Chemung County Broadband buildout	Chemung	\$20,000	100	Economic Development					
I-86 Additional Truck Parking	Chemung Elmira						Chemung County		
Elmira Area Levee Certification	C. Elmira, T. Elmira, T. Southport - North Elmira and South Elmira Levee Systems	\$1,950,000		Place Based Development	Complete by 2030	funding, may require remediation of deficiencies	TBD	City of Elmira, Town of Elmira, Town of Southport, NYS DEC, USACE, FEMA	Required for FEMA to accredit levees so that protected areas are not designated as high hazard floodplains on future Flood Insurance Rate Maps. Levees and floodwalls are located along north and south/southwest banks of the Chemung River, west bank of Newtown Creek, around Eldridge Park, and north bank of Seeley Creek (including sections of State Route 14).
243 Lake Street	Chemung	\$3,000,000	12	Place Based Development		Levee accreditation	Chemung County		

Project Name	Address/ location	Price	Jobs	Project Type	Timeline Start- End	roadblocks?	Sponsor/ Applicant	Partner Agencies	Detailed Project Description
Elmira Continued									
Southside BOA Implementation (City of Elmira)	Elmira	5,000,000	100	Place Based Development		Levee accreditation	Chemung County		
E Water Street Park Redesign	Chemung	2,000,000	5	Place Based Development			Chemung County		
East Water Street Rejuvenation – SR 14 to Madison Avenue	Elmira	\$3.4 Mill.		Place Based Development			NYDOT		N, CURB REPLACEMENT AND PEDESTRIAN RAMP & SIDEWALK REPLACEMENT, UPGRADE PEDESTRIAN CROSSINGS, SIGN REPLACEMENTS, SIGNAL UPGRADES AND NEW STRIPING ON EAST WATER STREET FROM NY 14
Carriage House/Lake Street Renovation	Elmira	\$4,000,000	30			Levee accreditation	Chemung County		
Former Star Gazette Building Redevelopment (boutique hotel)	201 Baldwin St, Elmira, NY 14901 Chemung	\$8 Million	4-5	Economic Development	TBD	Environmental, Levee accreditation	Chemung County	STEG, IDA, Elmira Downtown Development	Redevelopment of the vacant Star-Gazette building as a long-term stay and boutique hotel
St. Joseph's Campus Redevelopment	Chemung	\$200,000,000	150			Levee accreditation, Current use /occupancy	Chemung County		
Elmira Civic Historic District Redevelopment	Elmira	\$10,000,000	100	Economic Development	2025-2030	site control, levee accreditation	STEG/CCI DA		This district is located in Elmira's Census Tract 7. There are many vacant and underused areas, parking lots, that could be used for infill development. Working to attract developers to this area would help build on the momentum of Elmira's DRI project.
Community Bank Plaza & Riverfront Park redesign	Elmira	2,000,000	5	Place Based Development		Levee accreditation	Chemung County		
Erie Plaza - demolition and site readiness	Chemung	\$500,000	10			Levee accreditation	Chemung County		
City of Elmira LWRP (future implementation)	Chemung	3,000,000		Place Based Development			Chemung County		
E Water Street Redesign (phase 2 and 3)	Chemung	5,000,000		Place Based Development		Levee accreditation	Chemung County		
Clemens Center Redesign	Chemung	2,500,000		Place Based Development		Flood risk, levee accreditation	Chemung County		
Elmira Trees and Resilience	425 Pennsylvania Ave Suite 107 Elmira NY 14904	\$223,000	1.5	Place-based	March 2023 - Feb 2026	Continued county and community support in changing times	CCE Chemung		NYS DHS sponsored hazard mitigation planning grant. Goal is to improve infrastructure and include elements in climate mitigation plan to address community concerns and to mitigate hazards
Elmira Trees and Resilience II	425 Pennsylvania Ave Suite 107 Elmira NY 14904	\$350,000? TBD	2	Place-Based	March 2026-Feb 2029	Match funding, partners, county support, additional funding for community and municipality tree	CCE Chemung	Not yet applied for	Implementation grant - support a full-time natural resources staff and general horticulture staff member in Chemung Co, outreach and education in urban natural resources (forestry, flood mitigation, storm mitigation, emergency response).

Project Name	Address/ location	Price	Jobs	Project Type	Timeline Start- End	roadblocks?	Sponsor/ Applicant	Partner Agencies	Detailed Project Description
Elmira Continued									
Chemung County Critical Infrastructure	600 Milton Street, Elmira, NY 14901	\$5,000,000	10	Place Based Development	2025 - TBD		Chemung County	Various	Infrastructure. Series of projects to install infrastructure measures through the City of Elmira to reduce stormwater discharge to the existing combined sewer overflow system in order to reduce the frequency of combined sewer overflows to the Chemung River.
Chemung County Wastewater Treatment Plant Consolidation	600 Milton Street, Elmira, NY 14901	\$275,000,000	75	Economic Development	2020-2026		Chemung County		Infrastructure. Consolidation of two existing wastewater treatment facilities to a single 28.2 MGD improved treatment facility to address aging infrastructure and meet new discharge requirements.
Lake Street Bridge Amenities	Chemung	\$3,850,000	3				Chemung County		
REGIONAL RESILIENCY	I-86 ELMIRA, SR 54 & SR 54A	\$341,000	5	VARIOUS	3/6/2025 - 3/6/2027	STEEP SLOPES ISSUES	NYSDOT	NONE	INFRASTRUCTURE ASSET HARDENING IMPROVEMENTS ON I-86 IN ELMIRA, SR 352 IN THE TOWN OF BIG FLATS, TO IMPROVE RAIN AND FLOODING RESILIENCY, CHEMUNG COUNTY
Elmira Sidewalk Rehabilitation	Elmira	500,000	2	Place Based Development	2025-2030		Chemung County	city of elmira	A 2023 sidewalk survey conducted by ECTC and Chemung County Planning identified sidewalk conditions in the City of Elmira. The worst graded sidewalks will be targeted for repair,
I-86 DIAMOND GRINDING, SLAB REPLACEMENT AND CULVERT REHAB	ELMIRA TO LOWMAN	\$5,050,000	71	HIGHWAY RESURFACING	4/13/2025 - 11/13/2025	5 NONE	NYSDOT	NONE	I-86 EAST ELMIRA DIAMOND GRINDING, SLAB REPLACEMENT AND CULVERT REHAB, TOWNS OF HORSEHEADS, ELMIRA, ASHLAND AND CHEMUNG IN CHEMUNG COUNTY
Town of Big Flats									
Kahler Road	Chemung/Big Flats	7,500,000	10	Economic Development	2025-2030		Chemung County		
Airport Corporate Park South	Chemung	\$1,000,000	100	Economic Development		Flood risk	STEG/CCI DA		
Arnot Mall Redevelopment	Chemung	\$40,000,000	100	Economic Development		Low	Chemung County		
ELM Airport Parking (?)	Chemung						Chemung County		
Town of Chemung									
I-86 BRIDGE DECK OVERLAY AND JOINT REPLACEMENTS, BINS1061281,1061282, 1061361 & 1061362	I-86, TOWN OF CHEMUNG	\$5,750,000	81	BRIDGE REHABILITATION	10/11/2025 - 10/11/2026	5 - 6 NONE	NYSDOT	NONE	BRIDGE DECK OVERLAY & JOINT REPLACEMENTS, I-86 / CHEMUNG RIVER, BINS 1061281,1061282, 1061361 & 1061362, TO EXTEND SERVICE LIFE, TOWN OF CHEMUNG, CHEMUNG COUNTY.
Village of Elmira Heights									
Elmira Heights Industrial Park (CAF USA, Hardinge, etc...campuses)	Chemung	\$16+ Million		Economic Development		Flood risk	Chemung County		
Redevelopment Airflow site		\$5 million	15	Place Based Development					
Town of Erin									
Park Station Campsites	Erin	750,000	2	Place Based Development	2025-2030		Chemung County		Park Station is frequently at campsite capacity, and would benefit from additional campsites

Project Name	Address/ location	Price	Jobs	Project Type	Timeline Start- End	roadblocks?	Sponsor/ Applicant	Partner Agencies	Detailed Project Description
SR 223 OVER JACKSON CREEK BRIDGE REPLACEMENT, BIN 1041840	SR 223, TOWN OF ERIN	\$1,936,000	27	BRIDGE REPLACEMENT	1/20/2030 - 12/20/2030	0 NONE	NYSDOT	NONE	SR 223 OVER JACKSON CREEK BRIDGE REPLACEMENT TO ADDRESS CONDITION RATING, BIN 1041840, TOWN OF ERIN, CHEMUNG COUNTY
SR 223 OVER CAYUTA CREEK BRIDGE REPLACEMENT, BIN 1041880	SR 223, TOWN OF ERIN	\$1,500,000	21	BRIDGE REPLACEMENT	1/20/2030 - 12/20/2030	0 NONE	NYSDOT	NONE	SR 223 OVER CAYUTA CREEK BRIDGE REPLACEMENT TO ADDRESS CONDITION RATING, BIN 1041880, TOWN OF ERIN, CHEMUNG COUNTY
Project Name	Address/ location	Price	Jobs	Project Type	Timeline Start- End	roadblocks?	Sponsor/ Applicant	Partner Agencies	Detailed Project Description
Town of Horseheads									
NY 14 MBC PAVING - MIRACLE MILE	SR 14, TOWN OF HORSEHEADS	\$4,500,000	63	Place Based Development	6/7/2026 - 11/7/2026	NONE	NYSDOT	NONE	NY 14 PAVEMENT RESURFACING TO CORRECT PAVEMENT DEFICIENCIES, PHILO ROAD WEST TO OAKWOOD AVENUE (MIRACLE MILE), TOWN OF HORSEHEADS, CHEMUNG COUNTY.
Village of Horseheads									
Southern Tier Logistics and Advanced Manufacturing Business Park	Chemung	\$60,000,000	300	Economic Development		Levee accreditation	Chemung County		
SR 14 / NORFOLK- SOUTHERN RR, SUPERSTRUCTURE REP, BIN 1045970	VILLAGE OF HORSEHEADS	\$7,410,000	104	Economic Development	4/27/2025 - 12/27/2025	6	NYSDOT	NONE	BRIDGE SUPERSTRUCTURE REPLACEMENT, SR 14/ NORFOLK- SOUTHERN RAILROAD, BIN 1045970, TO EXTEND SERVICE LIFE, VILLAGE OF HORSEHEADS, CHEMUNG COUNTY.
Fairgrounds Building Improvements	chemung/horseheads	2,500,000	20	Economic Development	2025-2030		Chemung County		The Chemung County Fairgrounds are in need of various building upgrades and renovations, particularly a USDA kitchen and structural repairs.
Town of Southport									
Southport Correctional Facility Redevelopment	Chemung, Town of Southport	\$30,000	200	Economic Development	2026	Demolition, site control, flood risk	STEG/CCI DA		STEG is working with consultant to determine adaptive reuse strategy. An RFI process revealed no interested parties. Some interest from NYSEG, but could also accommodate manufacturing.
Brookside Mobile Home Park	Chemung	\$5,000,000	15	Place Based Development		Levee accreditation	Chemung County		
Village of Millport									
Schuyler County									
Alternative Energy	Schuyler - Countywide			Economic Development					
Alternative commutes (job sites, other counties)	Schuyler - Countywide			Economic Development					
Local vehicles for tourists	Schuyler - Countywide			Economic Development					
Childcare study / expansion	Schuyler - Countywide			Economic Development					
Microgrid energy studies in each municipality	Schuyler - Countywide			Economic Development					
Grid resilience Dept of Energy funding	Schuyler - Countywide								NYSERDA Grant due Feb 2025

Project Name	Address/ location	Price	Jobs	Project Type	Timeline Start- End	roadblocks?	Sponsor/ Applicant	Partner Agencies	Detailed Project Description
Town of Cayuta									
Alpine Resource Park	Town of Cayuta	\$40 million	150	Economic Development	Q4 25-Q4 2028	Infrastructure, possible flood risk	SCOPED	Multiple	Create Infrastructure for a 300 acre parcel between Elmira and Ithaca
Town of Dix									
New Housing Water/Wastewater Infrastructure Extension short loop	Town of Dix	\$3,000,000		Economic Development					
New Housing Water/Wastewater Extension complete loop (includes short extension)	Town of Dix	\$13,000,000		Economic Development					
Enhanced cell service: KOA Route 414	Town of Dix	\$1,000,000		Economic Development	2025		Cell Phone Companies	KOA Town of Dix	SCOPED Schuyler Co
Seasoning Plant	Business Park Dix	\$25 million	15	Economic Development	Q3 25-Q3 26	Infrastructure	SCOPED	multiple	Project is to bring in all utilities for the siting of a 200k sqft manufacturing facility
Truck break check	Town of Dix			Economic Development		Funding and Engineering	SCOPED		acquire Brake check test area on 414 on Northeast bond lane.
Rail Spur Siding to Business Park	Business Park Dix	\$1.5 million	2	Economic Development		Funding and Engineering	SCOPED		Develop a Rail spur/siding to serve the Schuyler County business park, & attract employers
Village of Watkins Glen									
Waterside Seneca Housing Development	Village of Watkins Glen		0	Economic Development	Q4 2025				
Project Seneca New Hotel at old WWTP	Village of Watkins Glen	\$25,000,000		Place Based Development		High flood risk		SCOPED, Schuyler County	
Substation Upgrade Village of Watkins Glen	Village of Watkins Glen	\$1,500,000		Economic Development		Flood risk			
Project Seneca Lift Station in Clute Park	Village of Watkins Glen	\$2,500,000		Place Based Development	6/2024-6/2025	In progress, flood risk	Village of Watkins Glen		Replacement of the aging sanitary lift station in Clute Park. Re-route of the forcemain to flow directly to the headworks of the new plant, eliminating the current canal crossing(s).
Water System Improvements	Village of Watkins Glen			Economic Development		Possible flood risk			
Village of Watkins Glen Water System Improvements Phase 1	303 N. Franklin Street, Watkins Glen, NY 14891	\$10,500,000	10	Infrastructure	Complete 2025		Village of Watkins Glen		Infrastructure. The project will pursue recommendations made in the 2019 Comprehensive Water System Study Preliminary Engineering Report (PER) by MRB, including but not limited to the following improvements: new intake screen; new intake pipeline; and rehabilitation or replacement of the raw water pump station, including new equipment, piping, and associated appurtenances.
Village of Watkins Glen Water System Improvements Phase 2	303 N. Franklin Street, Watkins Glen, NY 14891	\$11,000,000	10	Infrastructure	Bid 2025, Const 2025-2026		Village of Watkins Glen		Infrastructure. The project will pursue recommendations made in the 2019 Comprehensive Water System Study Preliminary Engineering Report (PER) by MRB, including but not limited to the following improvements: new intake screen; new intake pipeline; and rehabilitation or replacement of the raw water pump station, including new equipment, piping, and associated appurtenances.

Project Name	Address/ location	Price	Jobs	Project Type	Timeline Start- End	roadblocks?	Sponsor/ Applicant	Partner Agencies	Detailed Project Description
Marina Improvements	Village of Watkins Glen	\$300,000		Economic Development		Flood risk			
Village of Watkins Glen Collection System I/I Rehab	Village of Watkins Glen	\$7,200,000	10	Infrastructure		Possible flood risk			construction and all soft costs associated with relining or replacement of existing gravity sanitary sewer mains, replacing canal crossings, rehabilitating existing manholes, replacing sanitary lateral stubs for existing sewer customers, and the rebuilding/replacement of sewer lift stations. To increase the reliability and prevent increases in wastewater treatment & system maintenance costs
	Town of Hector								
Water Extension	Town of Hector			Economic Development		Funding	Town of Hector	Schuyler Co/SCOPE D	
New Firehouse/Community Center Mecklenburg Fire Department	Town of Hector	\$5,000,000		Place Based Development					
Smith Park Improvements	Town of Hector	\$1,000,000		Place Based Development					
New Town Hall	Town of Hector			Place Based Development					
Municipal energy efficiency projects	Village of Burdett	\$1,000,000		Place Based Development					
New wastewater system for village and portion of Town of Hector	Village of Burdett	\$90,000,000		Economic Development		Funding	Village of Burdett	Town of Hector/Schuyler Co/SCOPE D	Feasibility study will be completed in Feb 2025.
New housing development	Village of Burdett	\$1,000,000		Economic Development			Village of Burdett	Schuyler Co/SCOPE D	
Sidewalk Extension Projects	Village of Burdett	\$1,000,000		Place Based Development					
Barnum Street Park Improvement	Village of Burdett	\$200,000		Place Based Development					
Ryokan Inn	Town of Montour	\$20,000,000		Economic Development					
Havana Glen Park Enhancements	Town of Montour	\$500,000		Place Based Development		Possible flood risk			
New housing development	Village of Odessa	\$1,000,000	0	Economic Development					

Project Name	Address/ location	Price	Jobs	Project Type	Timeline Start- End	roadblocks?	Sponsor/ Applicant	Partner Agencies	Detailed Project Description
New housing development led by Habitat	Village of Odessa	\$500,000	0	Economic Development	2026	Cost	Habitat for Humanity Schuyler	USDA/HUD	In planning stages Jan 2025
Expansion of Sydney Place senior housing	Village of Odessa	\$500,000	0	Economic Development	2026	Cost	Arbor Housing	USDA	In planning stages Jan 2025
Project Name	Address/ location	Price	Jobs	Project Type	Timeline Start- End	roadblocks?	Sponsor/ Applicant	Partner Agencies	Detailed Project Description
Electric & Gas Utility Upgrades to support new housing development	Village of Odessa	\$4,700,000	0	Economic Development					
Improve wastewater system	Village of Odessa		1	Economic Development					
Stormwater system evaluation/upgrades	Village of Odessa	\$550,000		Place Based Development					
Park and trail enhancements	Village of Odessa	\$1,500,000		Place Based Development					
Sidewalk extension to new town hall	Village of Odessa	\$1,000,000	0	Place Based Development					
New fire house	Village of Odessa	\$2,500,000		Place Based Development					
New community center	Village of Odessa	\$2,500,000		Place Based Development					
Village of Montour Falls									
Redevelop Former IGA Food Market Site	Village of Montour Falls			Economic Development		Levee accreditation			
Redevelopment of former Shephard Niles Site as mixed use housing	Village of Montour Falls	\$40,000,000		Economic Development		Levee accreditation		Schuyler County IDA	
Develop new hotel in Montour Falls	Village of Montour Falls	\$10,000,000		Economic Development		Levee accreditation			
Water System Improvements	Village of Montour Falls	\$6,000,000		Place Based Development		Levee accreditation			
Water System Evaluation	Village of Montour Falls	\$52,500		Place Based Development					
Sanitary Sewer Improvements	Village of Montour Falls	\$5,375,000	10	Place Based Development		Levee accreditation			Based on the sewer study 2022. construction and all soft costs associated with relining existing gravity sanitary sewer mains, rehabilitating existing manholes, and replacing sanitary lateral stubs for existing sewer customers. extend the Village's collection system to serve the Havana Glen Mobile Home Park and surrounding properties.
Village of Montour Falls Owego Street Storm System Improvements	408 West Main Street, Montour Falls, NY 14865	\$714,000	2	Place Based Development			Village of Montour Falls		Infrastructure. Project to replace the existing failing stormwater collection system in Owego street. Subsurface utility work needs to be completed prior to a resurface/redesign of the road surface.

Project Name	Address/ location	Price	Jobs	Project Type	Timeline Start- End	roadblocks?	Sponsor/ Applicant	Partner Agencies	Detailed Project Description
Village of Montour Falls Main Street Improvements	408 West Main Street, Montour Falls, NY 14865	\$5,000,000	0				Village of Montour Falls		Improvements to Main Street to encourage downtown business development. Improvements to include pedestrian amenities, brick paving, roadway surfacing, outdoor cafe seating, streetside landscaping, and site lighting
Village of Montour Falls Sidewalk Lighting	Village of Montour Falls	\$1,000,000	0	Place Based Development		Levee accreditation			Infrastructure. Project to improve street and sidewalk lighting throughout the Village to improve safety and encourage pedestrian travel within the Village limits.
Marina Improvements	Village of Montour Falls	\$4,500,000		Economic Development		Flood risk			
Implementation of LWRP	Village of Montour Falls								
Establish new fire district with Odessa/MF/WG	Villages of Montour Falls/WG and Odessa				2025				Shared services grant submitted to state Jan 2025
Replacement of the Montour Falls Marina Seawall	Village of Montour Falls	\$1,100,000		Place Based Development		Flood risk			
Village of Montour Falls Compost Facility	408 West Main Street, Montour Falls, NY 14865	\$2,600,000	2	Infrastructure		Levee accreditation	Village of Montour Falls		Project to construct/operate a compost processing facility.
Montour Falls Levee Certification	Village of Montour Falls - Catharine Creek Left Bank and Right Bank Levee systems	1,300,000		Place Based Development	Complete by 2030	Funding, may require remediation of deficiencies	Village of Montour Falls	NYS DEC, USACE, FEMA	Required for FEMA to accredit the levees so that protected areas are not designated as high hazard floodplains on future Flood Insurance Rate Maps. Flood protection from the Catharine Creek Diversion Channel, Shequaga Creek, and L'hommedieu Creek benefits most developed areas in the Village.
Village of Montour Falls critical infrastrucute	408 West Main Street, Montour Falls, NY 14865	\$410,000		Infrastructure	2025-2026		Village of Montour Falls		Construction of a 100kw array to offset energy costs of the Village water supply pumps. Funded in part by a NYSERDA Grant
Water/Wastewater Study: Camp Monterey	Town of Orange	\$150,000		Economic Development					
Redevelopment of Camp Monterey	Town of Orange	\$20- \$50 Million	50	Economic Development					
Public water extension	Town of Reading			Economic Development	2026	Cost	Town/County	ARC/EFC/E DA	Town has engaged consultant for a feasibility study starting Jan 2025
Municipal Park Enhancements	Town of Tyrone	\$500,000		Place Based Development					
Corning, Steuben, and Hornell NYSDOT Integration Study pilot (Phase 2)	Steuben County			Human Development			NYSDOT		
Shovel Ready Site Development	Steuben County	\$20 million		Place Based Development	Ongoing		Steuben County IDA	Municipalities	Continued development of shovel ready sites to support business development activities
Implementation of the Steuben County Comprehensive Plan		\$1 million	8	Economic Development					

Project Name	Address/ location	Price	Jobs	Project Type	Timeline Start- End	roadblocks?	Sponsor/ Applicant	Partner Agencies	Detailed Project Description
Corning Area Levee Certification	Corning C. Corning, V. South Corning, T. Corning, V. Riverside, V. Painted Post, T. Erwin - Corning, South Corning, Painted Post, and Gang Mills Levee Systems	\$2,600,000		Place Based Development	Complete by 2030	funding, may require remediation of deficiencies	TBD	City of Corning; Villages of South Corning, Riverside, and Painted Post, Towns of Corning and Erwin; NYS DEC; USACE; FEMA	Required for FEMA to accredit levees so that protected areas are not designated as high hazard floodplains on future Flood Insurance Rate Maps. Levees and floodwalls are located along north and south/southwest banks of the Chemung River, west bank of Post Creek, east and west banks of Cutler Creek, north and south banks of the Cohocton River, east bank of Hodgman Creek, and west bank of the Tioga River
Parish Heights- Redevelopment of St. Vincent's Campus	City of Corning	\$30 Million	10	Human Development	Construction estimated to being by fall 2025 and last 18-24 months	Levee accreditation	Housing Visions	Multiple, ESD, HCR, OTDA, Pro Action, AIM	Redevelopment of former St. Vincent's campus into 45 units of affordable housing including 37 targeted for seniors, 8 workforce housing units, and former church conversion to childcare facility. Project will be also utilizing Federal and State Historic Rehabilitation Tax Credits.
Denison Park Stormwater and Infrastructure Improvements	City of Corning	\$712,635		Place Based Development	Design begin by January 2025 and Construction completed by May 2026		City of Corning	National Fish and Wildlife Foundation, EPA	Final design and construction of Infrastructure improvements at Denison Park to improve water quality of Denison Park Pond and Chemung River. Project will include bioretention features (rain gardens), permeable pavement, conservation landscaping, and planting of trees.
Corning Civic Center Plaza Public Art Park	City of Corning	\$1.5 Million		Place Based Development	Design to be complete by March 2025- funding and construction will be sought in phases		City of Corning		ARC-funded Master Plan for Corning Civic Center Plaza underway fall 2024-March 2025. Fisher Associates is prime consultant. Anticipated that development will be done in phases and working with adjacent property owners including Southeast Steuben County Library. Project is also looking at connection of Plaza to the Gaffer District and Market Street.
Corning Courthouse Historic Rehabilitation and Adaptive Reuse	City of Corning	\$2.8 Million	2	Human Development	Spring 2025- End of 2025	Funding	City of Corning and Private Developer	Potentially ESD	Redevelopment of former Steuben County Courthouse into 7 market-rate units
Pulteney Street- W. William Street Gateway Project	City of Corning/Village of Riverside	\$1,200,000		Place Based Development		Funding, levee accreditation	City of Corning	NYS DOT, Village of Riverside	This proposed project would enhance pedestrian/traffic safety by improving pedestrian crossings, adding sidewalk, new sidewalks where none currently exist. Potential for gateway enhancements to the City of Corning from west and incorporate Complete Streets principles.
Corning Wastewater Treatment Plant Boiler Replacement	City of Corning	\$883,200		Place Based Development		Levee accreditation	City of Corning		The City of Corning's two dual fuel digester boilers are over 30 years old and need of replacement for plant's continued operation.
City of Corning Aquatic Facility Improvements	City of Corning	6,747,200		Place Based Development		Funding, levee accreditation	City of Corning	Potentially NYSWIMS	Project includes modernizing the Denison Park Pool and removal of Stewart Park Pool and replacement with a Spray Park. This is consistent with recommendations found within the City of Corning's Park Strategy.

Project Name	Address/ location	Price	Jobs	Project Type	Timeline Start- End	roadblocks?	Sponsor/ Applicant	Partner Agencies	Detailed Project Description
Market Street Historic Street Light Replacement and Brick Improvements	City of Corning	\$6,163,956		Place Based Development		Funding, levee accreditation	City of Corning	CIDMA (BID), NYSERDA, Potentially NYSEG	Existing historic streetlights on Market Street are deteriorating and brick sidewalks will need replacement.
Boutique Hotel/Spa & Cottages	Corning	\$15 million			Q3 2025- Q 3 2030		Three Rivers	SCIDA	Phase 1: Revitalize existing structure into 12 room boutique hotel with indoor/outdoor event space and manicured grounds. Phase 2: Develop a Spa on-site and nature trails. Phase 3: Build out 8 townhomes and 4 cottages in 60+ surrounding acres, further develop nature trails.
BRIDGE BEARINGS	TOWN OF ERWIN & CITY OF CORNING Hornell	\$1,750,000	25	BRIDGE REHAB	1/19/2025 - 1/19/2026	NONE	NYSDOT	NONE	BRIDGE BEARING REPAIRS, I-86 / REYNOLDS AVE. (BINS 1074851 & 1074852) AND I-99 / SR 417 (BIN 1062041 & 1062042), TO EXTEND SERVICE LIFE, TOWN OF ERWIN AND CITY OF CORNING, STEUBEN COUNTY
Hornell Levee Certification	C. Hornell, T. Hornellsville - Northwest Hornell, Northeast Hornell, West Hornell, Southwest Hornell, and Southeast Hornell Levee Systems	\$3,250,000		Place Based Development	Complete by 2030	funding, requires remediation of deficiencies	City of Hornell	Town of Hornellsville, NYS DEC, USACE, FEMA	Required for FEMA to accredit levees so that protected areas are not designated as high hazard floodplains on future Flood Insurance Rate Maps. Levees and floodwalls are located along the Canisteo River, Canacadea Creek, Chauncy Run, and Cosby Creek. These levees and floodwalls provide flood protection for most development within the City of Hornell.
Hornell Levee Remediation	City of Hornell - Northwest Hornell, Northeast Hornell, West Hornell, Southwest Hornell, and Southeast Hornell Levee Systems	More than \$5 million		Place Based Development	Complete by 2030	funding	City of Hornell	NYS DEC, USACE, FEMA	Preliminary analysis by FEMA suggests that the levees and floodwalls protecting the City of Hornell include sections that do not provide adequate protection. Increased protection levels are needed to improve safety and for levee accreditation by FEMA (so that protected areas are not designated as high hazard floodplains on future Flood Insurance Rate Maps).
City of Hornell Water Main Replacement	Hornell	2,375,000		Place Based Development		Levee accreditation	City of Hornell		2025 NYSEFC IUP Listing 18908
Hornell Intermunicipal Sewer Infrastructure Improvement Project	City of Hornell/Town of Hornellsville/Village of North Hornell	\$15.4 million		Place Based Development		Funding	City of Hornell/Town of Hornellsville/Village of North Hornell	Potentially DEC, EFC, DOH, FEMA	The three municipalities have entered into an agreement with Labella to produce a Preliminary Engineering Report in order to understand the possibilities to provide suitable redundancy, reduce odors, and ensure sufficient capacity to serve the community and H.P. Hood at present (maximum allowable daily discharge of 330,000 gallons) and in the future (possible 500,000 gallons per day).
South Yards Industrial Park	Hornell	\$2 million	50	Place Based Development		Levee accreditation			
Redevelopment of St. James	Hornell	\$50 Million		Place Based Development		Levee accreditation			

Project Name	Address/ location	Price	Jobs	Project Type	Timeline Start- End	roadblocks? ABILITY TO GET FLAGGING AGREEMENT WITH NORFOLK SOUTHERN	Sponsor/ Applicant	Partner Agencies	Detailed Project Description
NY 36/LODER ST & NORFOLK- SOUTHERN RR BRIDGE REHAB, BIN 1023559	SR 36, City of Hornell	\$2,609,000	37	BRIDGE REHABILITATIO N	6/22/2025 - 12/22/202 6		NYSDOT	NONE	BRIDGE REHABILITATION, NY 36 / LODER ST & NSRR BRIDGE REHABILITATION, TO EXTEND SERVICE LIFE, BIN 1023559, TOWN OF HORNELL, STEUBEN, CO
Church Street over Canacadea Ci	Hornell	\$2,900,000		BRIDGE REHABILITATIO N			NYSDOT		replace a c40 year old city bridge
SR 36 HORNELL GATEWAY CONNECTOR PROJECT (PHASE II)	SR 36, CITY OF HORNELL	\$23,899,200	335	HIGHWAY RECONSTRUCT ION	10/30/202 7 - 12/30/202 9	TIGHT SCHEDULE - CONSULTANT DESIGNER	NYSDOT	NONE	RECONSTRUCTION AND MODERNIZATION OF SR 36 AND NEW PEDESTRIAN FACILITIES BETWEEN BROADWAY STREET AND ADSIT STREET IN THE CITY OF HORNELL AND TOWN OF HORNELLSVILLE, STEUBEN COUNTY.
	Town of Addison								
	Village of Addison								
Village of Addison Water System Improvements	35 Tuscarora Street, Addison, NY 14801	\$1,700,000	5	Infrastructure	On hold	Funding	Village of Addison		Infrastructure. Constructing new water main to replace existing undersized mains, constructing a new potable water storage tank, addressing source contamination concerns, and replacing a series of outdated and/or inoperable fire hydrants throughout the Village to improve water quality, supply security, and fire protection capabilities. Design complete. Needs better funding package to move to construction.
Village of Addison Phase III Wastewater Improvements	35 Tuscarora Street, Addison, NY 14801	\$1,000,000	5	Infrastructure			Village of Addison		Infrastructure. This work will include construction and all soft costs associated with relining existing gravity sanitary sewer mains, rehabilitating existing manholes, and replacing sanitary lateral stubs for existing sewer customers. The project will prevent increases in wastewater treatment and collection system maintenance costs by reducing the amount of extraneous flow into the wastewater system.
	Town of Avoca								
Avoca Levee Certification	V. Avoca, T. Avoca - Avoca Levee System	\$650,000		Place Based Development	Complete by 2030	funding, may require remediation of deficiencies	Village of Avoca	Town of Avoca, NYS DEC, USACE, FEMA	Required for FEMA to accredit levees so that protected areas are not designated as high hazard floodplains on future Flood Insurance Rate Maps. Levees are located on east bank of the Cohocton River and west bank of Salmon Creek, providing flood protection for almost all development within the Village of Avoca.
	Town of Bath								
Bath Levee Certification	V. Bath, T. Bath - Bath Levee System	\$650,000		Place Based Development	Complete by 2030	funding, may require remediation of deficiencies	Village of Bath	Town of Bath, NYS DEC, USACE, FEMA	Required for FEMA to accredit the levee so that protected areas are not designated as high hazard floodplains on future Flood Insurance Rate Maps. Levee is located along north bank of the Cohocton River (including sections of I- 86).

Project Name	Address/ location	Price	Jobs	Project Type	Timeline Start- End	roadblocks?	Sponsor/ Applicant	Partner Agencies	Detailed Project Description
Alstom - NSR Hybrid Locomotive	Kanona NY	\$21,310,000	40	Economic Development	1/25 - 12/28	high flood risk	Steuben County IDA	FRA	The Alstom-NSR Hybrid Locomotive project is a collaboration between Steuben County Industrial Development Agency (IDA), Alstom, NSR, and the New Energy New York (NENY) tech hub to produce and test two hybrid dual mode locomotives that combine the cleanest diesel engine available with the zero emissions of a battery electric locomotive. This "locomotive of the future" will be remanufactured at Alstom's Kanona facility in Bath, New York.
Bath/Kanona Water Systems Steuben County IDA	Bath	\$6 million		Place Based Development		High flood risk			
Bath/Hammondsport Rail Line Restoration	Bath/Hammondsport	\$5 million	25	Place Based Development	Ongoing	Flood risk, levee accreditation	Steuben County IDA	B&H Railroad	Continue investing in the B&H Rail line to enhance and support new commercial development along the rail line.
Project Name	Address/ location	Price	Jobs	Project Type	Timeline Start- End	roadblocks?	Sponsor/ Applicant	Partner Agencies	Detailed Project Description
Bath Water/Sewer extension to Lake Salubria	Bath	\$20 million		Place Based Development		Flood risk, levee accreditation			
Phillips Electronics Redevelopment	Town of Bath	\$5 Million		Place Based Development	Ongoing		Steuben County IDA	Town of Bath	Work to redevelop the former Philips Lighting site for commercial/industrial use.
I-86 / TOWN ROAD 64 BRIDGE DECK REPLACEMENTS (BINS 1061411 & 1061412)	I-86, TOWN OF BATH	\$4,963,000	69	BRIDGE REHABILITATION	11/23/2021 - 11/23/2022	NONE	NYSDOT	NONE	BRIDGE DECK REPLACEMENTS, I-86 / TOWN ROAD 64 (BINS 1061411 & 1061412), TO EXTEND SERVICE LIFE, TOWN OF BATH, STEUBEN COUNTY.
I-86 / BABCOCK HOLLOW ROAD BRIDGE DECK REPLACEMENTS (BINS 1061431 & 1061432)	I-86, TOWN OF BATH	\$4,622,000	65	BRIDGE REHABILITATION	12/18/2021 - 11/18/2022	NONE	NYSDOT	NONE	BRIDGE DECK REPLACEMENTS, I-86 / BABCOCK HOLLOW ROAD, BINS 1061431 & 1061432, TO EXTEND SERVICE LIFE, THE TOWN OF BATH, STEUBEN COUNTY.
I-86 OVER NY 53 BRIDGE DECK REPLACEMENTS (BINS 1061611 & 1061612)	I-86, HAMLET OF KANONA Village of Bath	\$5,387,000	75	BRIDGE REHABILITATION	1/6/2030 - 11/6/2030	NONE	NYSDOT	NONE	I-86 / SR53 BRIDGE DECK REPLACEMENTS, BINS 1061611 & 1061612 IN THE TOWN OF KANONA, STEUBEN COUNTY.
Village of Bath NY Forward	Village of Bath	\$4,500,000	4	Place Based Dev	2025-2028			Village of Bath	creating an active downtown with enhanced public spaces, strategic placement of amenities and new housing opportunities that will attract visitors and foster an atmosphere that will retain and attract residents and businesses.
Village of Bath State Highway Water Main and Tank Replacement Project	110 Liberty Street, Bath, NY 14810	\$19,900,000	10	Infrastructure	2024-2026			Village of Bath	Infrastructure. Project to replace aging water distribution infrastructure (20,000 ft of water main + both water storage tanks) to replace failing infrastructure, reduce water loss, and improve water quality.
Village of Bath Water & Gas System Improvements	Bath	\$6 Million	5	Place Based Development		Levee accreditation			
Dana Lyons School Redevelopment	Bath	\$29 million		Human Development	11/2024	Levee accreditation	Providence Housing		Redevelop the vacant school into 49 housing units to support workforce housing.

Project Name	Address/ location	Price	Jobs	Project Type	Timeline Start- End	roadblocks?	Sponsor/ Applicant	Partner Agencies	Detailed Project Description
Village of Bath Gas Main Replacement	110 Liberty Street, Bath, NY 14810 Village of Avoca	\$9,300,000	8	Infrastructure	2024-2026		Village of Bath		Infrastructure. Replacement of ~12 miles of leak-prone gas distribution main and service lines throughout the Village of Bath
Village of Avoca Water System Evaluation	Village of Avoca Town of Campbell	\$100,000		Place Based Development			Village of Avoca		
I-86 / CURTIS HOLLOW CREEK BRIDGE DECK REPLACEMENTS (BINS 1011271 & 1011272)	I-86, TOWN OF CAMPBELL Town of Canisteo	\$5,050,000	71	BRIDGE REHABILITATION	12/12/202 6 - 11/12/202 7	NONE	NYSDOT	NONE	BRIDGE DECK REPLACEMENTS, I-86 / CURTIS HOLLOW CREEK (BINS 1011271 & 1011272), TO EXTEND SERVICE LIFE, TOWN OF CAMPBELL, STEUBEN COUNTY.
South Canisteo (Bennetts Creek) Levee Remediation and Certification	Town of Canisteo - South Canisteo Levee System	More than \$1 million		Place Based Development	Complete by 2030	funding	Town of Canisteo	NYS DEC, USACE, FEMA	This short levee along the south bank of Bennetts Creek overtopped in August 2024. Increased levee height and certification could enable accreditation by FEMA so that the protected area is not designated as a high hazard floodplain on future Flood Insurance Rate Maps.
Village of Canisteo Levee Certification	V. Canisteo, T. Canisteo - North Canisteo Levee System	\$650,000		Place Based Development	Complete by 2030	funding, may require remediation of deficiencies	Village of Canisteo	Town of Canisteo, NYS DEC, USACE, FEMA	Required for FEMA to accredit levees so that protected areas are not designated as high hazard floodplains on future Flood Insurance Rate Maps. Levees are located along the south bank of the Canisteo River, north/northwest bank of Bennetts Creek, and northeast bank of Purdy Creek. This system provides flood protection for almost all development within the Village of Canisteo and some areas in the Town of Canisteo.
Canisteo Wind-Invenenergy	Jasper, troupsburg, Canisteo, Cameron, West Union, Greenwood, City of Hornell, Hornellsville Village of Canisteo	\$420 Million	12	Economic Development	Q3 2025 - Q4 2026	Drainage, possible flood risk			
Village of Canisteo Levee Remediation	Village of Canisteo - North Canisteo Levee System Town of Cohocton	More than \$2 million		Place Based Development	Complete by 2030	funding	Village of Canisteo	Town of Canisteo, NYS DEC, USACE, FEMA	Levee remediation is needed to increase the level of protection from Purdy Creek and Bennetts Creek, including the location that overtopped in August 2024.
SR 371 / KIRKWOOD CREEK BRIDGE REPLACEMENT (BIN 1046900)	SR 371, TOWN OF COHOCTON Village of Cohocton	\$2,241,000	31	BRIDGE REPLACEMENT	1/4/2026 - 12/4/2026	NONE	NYSDOT	NONE	BRIDGE REPLACEMENT, SR 371/KIRKWOOD CREEK, BIN 1046900, TO ADDRESS CONDITION RATING, TOWN OF COHOCTON, STEUBEN COUNTY.
Cohocton Water Tank Rehab Distribution Upgrades		3,759,150		Place Based Development			Town of Cohocton		2025 NYSEFC IUP Listing 19243

Project Name	Address/ location	Price	Jobs	Project Type	Timeline Start- End	roadblocks?	Sponsor/ Applicant	Partner Agencies	Detailed Project Description
Town of Corning									
Hickling Plant Redevelopment		\$10 Million		Economic Development		Flood risk			
I-86 MBC PAVING	E. CORNING TO CHEMUNG C/L	\$2,850,000	40	HIGHWAY PRESERVATIO N	4/27/2025 - 11/27/2025		NONE	NYSDOT	I-86 MBC MILL AND FILL, EAST CORNING TO CHEMUNG COUNTY LINE AND RAMPS FOR EXITS 46, 47 & 48, TOWN OF CORNING, STEUBEN COUNTY
I-86 / NS RR ICICLE BRIDGE REPLACEMENT, BIN 1072880	I-86, TOWN OF CORNING	\$35,000,000	490	BRIDGE REPLACEMENT	1/6/2030 - 12/6/2031		COMPLICATED ALIGNMENT AND INVOLVEMENT WITH NORFOLK SOUTHERN	NYSDOT	SR 36 SLOPE REPAIR, TOWN OF TROUPSBURG, STEUBEN COUNTY
Village of Riverside									
I-86/NORFOLK-SOUTHERN RR RETAINING WALL REHAB	I-86, VILLAGE OF RIVERSIDE	\$4,224,000	59	RETAINING WALL REPAIR	1/17/2027	12/17/2027	ABILITY TO GET FLAGGING AGREEMENT WITH NORFOLK SOUTHERN	NYSDOT	RETAINING WALL REHABILITATION, I-86 BRIDGES OVER THE NORFOLK-SOUTHERN RAILROAD, BINS 1074821, 1074822, 1074830 & 1074840, TO EXTEND SERVICE LIFE, VILLAGE OF RIVERSIDE, STEUBEN COUNTY
Town of Erwin									
Village of South Corning Sanitary Sewer Collection System Upgrades	7 Clark Street, Corning, NY 14830	\$2,000,000	0	Infrastructure				Village of South Corning	Infrastructure. Based on the findings of the 2024 study, this work will include construction and all soft costs associated with the recommended renovation and upgrades to the Village's existing collection system.
Town of Erwin									
Erwin Housing Development	Erwin	\$30 million		Place Based Development	Q2 2025- Q2 2027	Possible flood risk	Three Rivers	multiple	Market rate housing development in Erwin.
Family Life Network expansion	Town of Erwin	\$30 million	40	Human Development	Completed Q4 2026	Levee accreditation	Family Life	Town of Erwin	Development of a new corporate headquarters and theatrical venue for Family Life Network
Village of Painted Post									
Development of the W. Water St. Site (former Dresser Rand Foundry)	Painted Post	\$26 million	42	Place Based Development		Levee accreditation			
Painted Post Wastewater Treatment Plant	Painted Post	2,100,000		Place Based Development		Levee Accreditation	Village of Painted Post		2025 NYSEFC IUP Listing C8-6418-03-00
Painted Post Water Well Upgrades, replace storage tank	Painted Post	8,289,487		Place Based Development		Levee accreditation	Village of Painted Post		2025 NYSEFC IUP Listing 18863
SR 415 MBC PAVING PAINTED POST	SR 415, VILLAGE OF PAINTED POST	\$5,980,000	84	HIGHWAY PRESERVATIO N	3/26/2026	12/26/2027	DRAINAGE ISSUES	NYSDOT	MBC PAVING, SIDEWALK AND DRAINAGE REPAIRS, SR 415 FROM MEADS CREEK TO CORNING CITY LIMIT, TO RETURN TO STATE OF GOOD REPAIR, TOWN OF ERWIN, STEUBEN COUNTY.

Project Name	Address/ location	Price	Jobs	Project Type	Timeline Start- End	roadblocks?	Sponsor/ Applicant	Partner Agencies	Detailed Project Description
Town of Hornellsville									
SR 36 HORNELL GATEWAY CONNECTION PROJECT (PHASE I)	SR 36, N. HORNELL AND T- HORNELLSVILLE	\$45,725,800	640	HIGHWAY RECONSTRUCT ION	6/8/2025	12/8/2027	TIGHT SCHEDUL E - CONSULT ANT DESIGNER	NYSDOT	SR 36 PAVEMENT RECONSTRUCTION FROM CASS ST. TO I-86, BRIDGE REPAIRS TO BINS 1069419, 1069421, 1069422 & 1069449, AND SR 36 AND CR 66 INTERSECTION RECONSTRUCTION, HORNELLSVILLE, STEUBEN COUNTY.
SR 21 CULVERT REPLACEMENT, CIN C640470	SR 21, TOWN HORNELLSVILLE	\$1,020,000	14	CULVERT REPLACEMENT S	9/21/2025	10/21/2026	NONE	NYSDOT	SR 21 CULVERT REPLACEMENT (CIN C640470), TOWN OF HORNELLSVILLE, STEUBEN COUNTY.
Village of North Hornell									
North Hornell Levee Certification	Village of North Hornell - North Hornell Levee System	\$650,000		Place Based Development	Complete by 2030	funding, may require remediation of deficiencies	Village of North Hornell	NYS DEC, USACE, FEMA	Required for FEMA to accredit the levee so that protected areas are not designated as high hazard floodplains on future Flood Insurance Rate Maps. This levee provides flood protection from the Canisteo River for the southern part of the Village of North Hornell.
Big Creek North Hornell Levee Remediation and Certification	Village of North Hornell - South bank of Big Creek	More than \$500,000		Place Based Development	Complete by 2030	funding	Village of North Hornell	NYS DEC, USACE, FEMA	The history and condition of this levee are not known. The structure provides some flood protection from Big Creek for the northern part of the Village of North Hornell. Remediation and certification would be required for FEMA to accredit the levee so that protected areas are not designated as high hazard floodplains on future Flood Insurance Rate Maps.
Town of Jasper									
Jasper PS Rehab, Sewer Rehab, STP Rehab		990,893		Place Based Development		Flood risk	Town of Jasper		2025 NYSEFC IUP Listing C8-6406-04-00
Jasper Sewer Rehab, STP Rehab Phase II		881,000		Place Based Development		Flood risk	Town of Jasper		2025 NYSEFC IUP Listing C8-6406-05-00
SR 417 & SR 36 MBC PAVING	SR 417 & SR 36, HAMLET OF JASPER	\$5,250,000	74	HIGHWAY PRESERVATIO N	3/5/2026	11/5/2026	DRAINAGE ISSUES	NYSDOT	PAVEMENT REHABILITATION AND DRAINAGE, SR 417 & NY 36, SR 417 & SR 36 INTERSECTION TO THE SR 417/TUSCARORA CK BRIDGE (BIN 1012600), TO RETURN TO STATE OF GOOD REPAIR, TOWN OF JASPER, STEUBEN COUNTY.
Town of Lindley									
Town of Prattsburgh									
Prattsburgh Downtown Redevelopment	Prattsburgh	1 million		Place Based Development		Possible flood risk			
Town of Prattsburgh Water	Prattsburgh	\$7.7 Million		Place Based Development		Possible flood risk	Town of Prattsburgh		Also listed in NYS EFC IUP Listing #19574
Town of Prattsburgh Downtown Sewer District	19 North Main Street, PO Box 427, Prattsburgh, NY 14873	\$2,300,000	3	Infrastructure	TBD	Possible flood risk	Town of Prattsburgh		Infrastructure. Formation of a new sewer district and creation of a new sewer collection system and community subsurface septic system to serve the downtown area and Prattsburgh Central School
Prattsburgh Wind	Prattsburgh, Cohocton, Wheeler, Howard, Avoca	\$560 million	6	Economic Development	Q3 2025 - Q4 2026	Drainage			

Project Name	Address/ location	Price	Jobs	Project Type	Timeline Start- End	roadblocks?	Sponsor/ Applicant	Partner Agencies	Detailed Project Description
Town of Pulteney									
SR 54A OVER ROTH CREEK (BIN 1026980)	SR 54A, TOWN OF PULTENEY	\$2,695,000	38	BRIDGE REPLACEMENT	1/7/2029	12/7/2029	STEEP SLOPES ISSUES	NYSDOT	SR 54A OVER ROTH CREEK, BRIDGE REPLACEMENT, TO ADDRESS CONDITION RATING, BIN 1026980, TOWN OF PULTENEY, STEUBEN COUNTY
Town of Troupsburg									
Troupsburg Sewer Project	Troupsburg	\$750,000		Place Based Development		Possible flood risk			
Town of Urbana									
SR 36 / TROUPS CREEK BRIDGE REPLACEMENT, BIN 1023460	SR 36, TOWN OF TROUPSBURG	\$8,600,000	120	BRIDGE REPLACEMENT	7/21/1905	12/15/2030	SPECIAL GEOTECHNICAL ISSUES AT THIS BRIDGE	NYSDOT	BRIDGE REPLACEMENT, SR 36 / TROUPS CREEK, TO ADDRESS CONDITION RATING, BIN 1023460, TOWN OF TROUPSBURG, STEUBEN COUNTY
Town of Urbana									
Hammondsport Urbana Project Implementation	Keuka Waterfront and surrounding areas as defined by the community strategic investment plan	\$12 million		Place Based Development	6/25 - 12/27	Community Capacity, funding, regulatory, possible flood risk	multiple	multiple	Project Implementation for the Hammondsport Urbana NY Forward strategic investment plan to create a premier Finger Lakes destination for families to grow work and thrive.
Welcome Center at Champlin Beach	Champlin Beach, 8533 NY-54, Hammondsport, NY 14840	2022 estimate of \$3,000,000	TBD	Place-based	2025-2026	Removed from NY Forward due to budget constraints, possible flood risk	Town of Urbana		Construction of a Welcome Center to enhance tourism and community use, featuring informational kiosks, restrooms, and retail space. Aligns with waterfront access and economic development priorities.
Town of Urbana									
Rails to Trails Project	Main Street, Urbana, following the old Bath & Hammondsport railroad bed	2023 estimate of \$1,406,723	19	Economic, Place-based	2025-2028	Funding - Town has sought funding through TAP and LWRP without success			Preliminary construction drawings have been developed. The project advances the Hammondsport-Urbana Waterfront Master Plan by linking the Curtiss Museum to Curtiss Park through an accessible shared-use path. The 2020 Hammondsport Comprehensive plan also includes an action item to "establish a rail to trail connection Main Street to waterfront." The trail will be a publicly accessible amenity that aligns with their existing waterfront plan. The trail enhances the Glenn H. Curtiss Aviation Museum
Town of Urbana									
Completion of Water District	State Route 54 Corridor, Urbana, New York	TBD	TBD	Economic, Place-based	2025-2027	High material costs	Town of Urbana		The project involves the construction of a municipal water district along State Route 54 to address the lack of municipal water infrastructure, which has hindered housing development. It includes updated engineering, procurement, and construction.
Town of Urbana									
CULVERT & RETAINING WALL PROJECT	SR 54 & 54A - HAMMONDSPORT & URBANA	\$2,998,000	42	CULVERT REHAB	2/23/2025 - 12/23/2026	STEEP SLOPES ISSUES	NYSDOT		CULVERT REPLACEMENTS AND RETAINING WALL REPAIRS TO EXTEND SERVICE LIFE ON SR 54 & 54A IN THE TOWNS OF BARRINGTON, PULTENEY AND URBANA IN STEUBEN AND YATES COUNTIES.
Town of Urbana									
NY 54A CULVERT REPLACEMENT - CIN 205068	SR 54A, TOWN OF URBANA	\$1,500,000	21	CULVERT REPLACEMENT S	1/18/2026 - 12/18/2026	STEEP SLOPES ISSUES	NYSDOT		CULVERT REPLACEMENT - NY 54A, CIN 205068, TOWN OF URBANA, STEUBEN COUNTY

Project Name	Address/ location	Price	Jobs	Project Type	Timeline Start- End	roadblocks?	Sponsor/ Applicant	Partner Agencies	Detailed Project Description
Village of Hammondsport									
Finger Lakes Rail Riders/B&H Rail Redevelop.	Bath/ Hammondsport	\$350,000	2-3	Economic Development					
Glen Curtiss Memorial School Redevelopment		\$20 Million	50	Place Based Development					
Hammondsport/Urbana Champlain Beach Welcome Center Redevelopment	Hammondsport /Urbana	\$3 million	15	Place Based Development		Possible flood risk			
Village of Hammondsport Water System Evaluation	18 Water Street, Hammondsport, NY 14840	\$52,500	0	Infrastructure	TBD		Village of Hammondsport		evaluate the existing water system and identify the critical needs of the system, both in terms of potable use and fire protection. evaluate the condition and remaining lifespan of all water system assets and provide recommendations for meeting identified needs.
Hammondsport/Urbana Curtis Park Redevelopment	Hammondsport /Urbana	\$1.2 million	5	Human Development		Flood risk			
Hammondsport/Urbana Depot Park Reno & Upgrades	Hammondsport /Urbana	\$1.5 million	10	Place Based Development		Flood Risk			
Town of Wayland									
Wayland Business Park	Wayland	\$2 million	50	Place Based Development	Ongoing	Flood risk	Steuben County IDA	Town of Wayland	
Town - Loon Lake Sewer	Wayland	15,646,684		Place Based Development			Town of Wayland		2025 NYSEFC IUP Listing C8-6424-01-00
Wayland Sewer Village and Town STP UP Disinfection	Wayland	4,000,000		Place Based Development			Village of Wayland		2025 NYSEFC IUP Listing C8-6414-03-00
Village of Wayland									
Wayland Main St. Redevelopment	Wayland	\$5 million	5	Place Based Development	2025-2026	Flood risk		Village of Wayland	
Town of Woodhull									
Southern Tier Library System - Library Services Mobile Outreach Program	Schuyler & Steuben	\$1 million	2	Human Development	Ongoing	Recurring Cost	Southern Tier Library Ssystem	Local Libraries	Re-establishment of Regional Book Mobile that would provide mobile outreach including: library materials, programs, digital literacy, counseling services, referrals to other agencies for support services.
Southern Tier Library System - EV Charging Stations	Chemung, Schuyler, Steuben	\$150,000	3	Economic Development	2026	Local match for state/federal program	Southern Tier Library Ssystem	Local Libraries	Installation of EV charging stations at all public libraries in Chemung, Schuyler, and Steuben counties.
Southern Tier Library System - External and Internal WIFI Expansion Project	Chemung, Schuyler, Steuben	\$500,000	2	Economic Development	2025 and 2026	Local match for state/federal program	Southern Tier Library Ssystem	Local Libraries	Expansion of Internal and External WIFI connections at local libraries in CSS counties to broadcast free, public signals further beyond libraries into public spaces.
Southern Tier Library System - Dark Fiber Build to Remaining STLS Libraries	Chemung, Schuyler, Steuben	\$1 million	2	Economic Development	2026	One time construction cost	Southern Tier Library Ssystem	Local Libraries	One time cost to fund build out of STN dark fiber to libraries in Hector, VanEtten, Southport, Greenwood
Southern Tier Library System - Energy Independance Installations at Libraries	Chemung, Schuyler, Steuben	\$2 million	2	Economic Development	2026 and 2027	One time construction cost	Southern Tier Library Ssystem	Local Libraries	One time investment in local libraries to local electric or geothermal heating/colling to reduce operational costs and dependency on fossil fuels.