

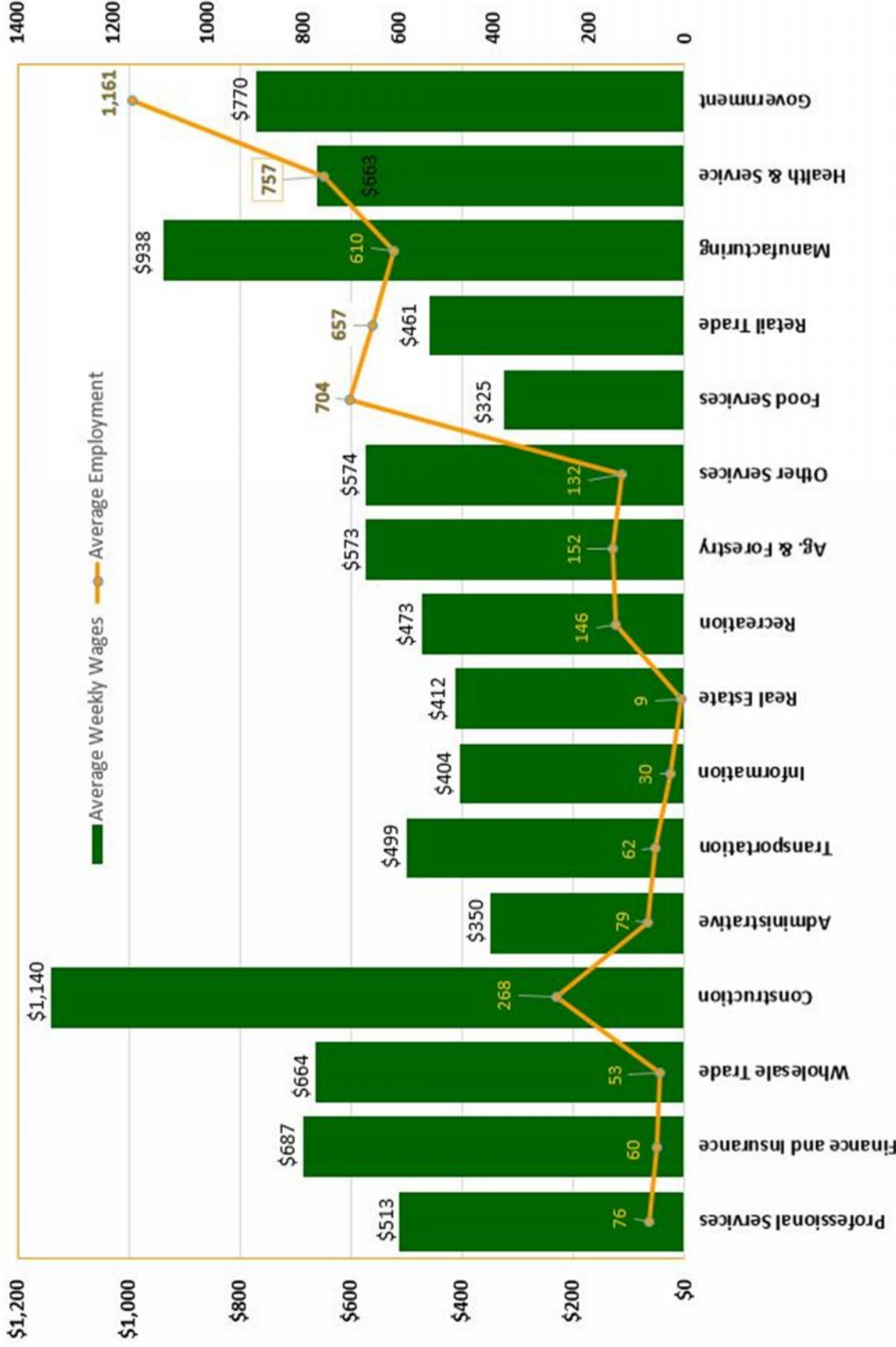


Schuyler County Economic Profile For the 2016 CEDS

Applicants and Openings for June 2015

| OCCUPATIONAL CATEGORY | APPLICANTS | OPENINGS | RATIO OF APPLICANTS TO OPENINGS |
|--|------------|----------|---------------------------------|
| Management | 20 | 0 | No Openings |
| Business and Financial Operations | 5 | 0 | No Openings |
| Computer and Mathematical | 3 | 0 | No Openings |
| Architecture and Engineering | 6 | 2 | 3:1 |
| Life, Physical, and Social Science | 3 | 1 | 3:1 |
| Community and Social Services | 7 | 1 | 7:1 |
| Legal | 1 | 0 | No Openings |
| Education, Training, and Library | 6 | 2 | 3:1 |
| Arts, Design, Entertainment, Sports, and Media | 4 | 1 | 4:1 |
| Healthcare Practitioner and Technical | 2 | 9 | 1:5 |
| Healthcare Support | 10 | 1 | 10:1 |
| Protective Service | 3 | 1 | 3:1 |
| Food Preparation and Serving Related | 52 | 3 | 17:1 |
| Building and Grounds Cleaning and Maintenance | 24 | 10 | 2:1 |
| Personal Care, Personal Service, and Gaming | 12 | 0 | No Openings |
| Sales and Related | 46 | 0 | No Openings |
| Office, Clerical and Secretarial | 88 | 1 | 88:1 |
| Farming, Fishing, and Forestry | 1 | 3 | 1:3 |
| Construction and Extraction | 30 | 1 | 30:1 |
| Installation, Maintenance, and Repair | 19 | 0 | No Openings |
| Production | 111 | 4 | 28:1 |
| Transportation and Material Moving | 56 | 11 | 5:1 |

Average Weekly Wages and Employment by Industry Schuyler County Q2 2015



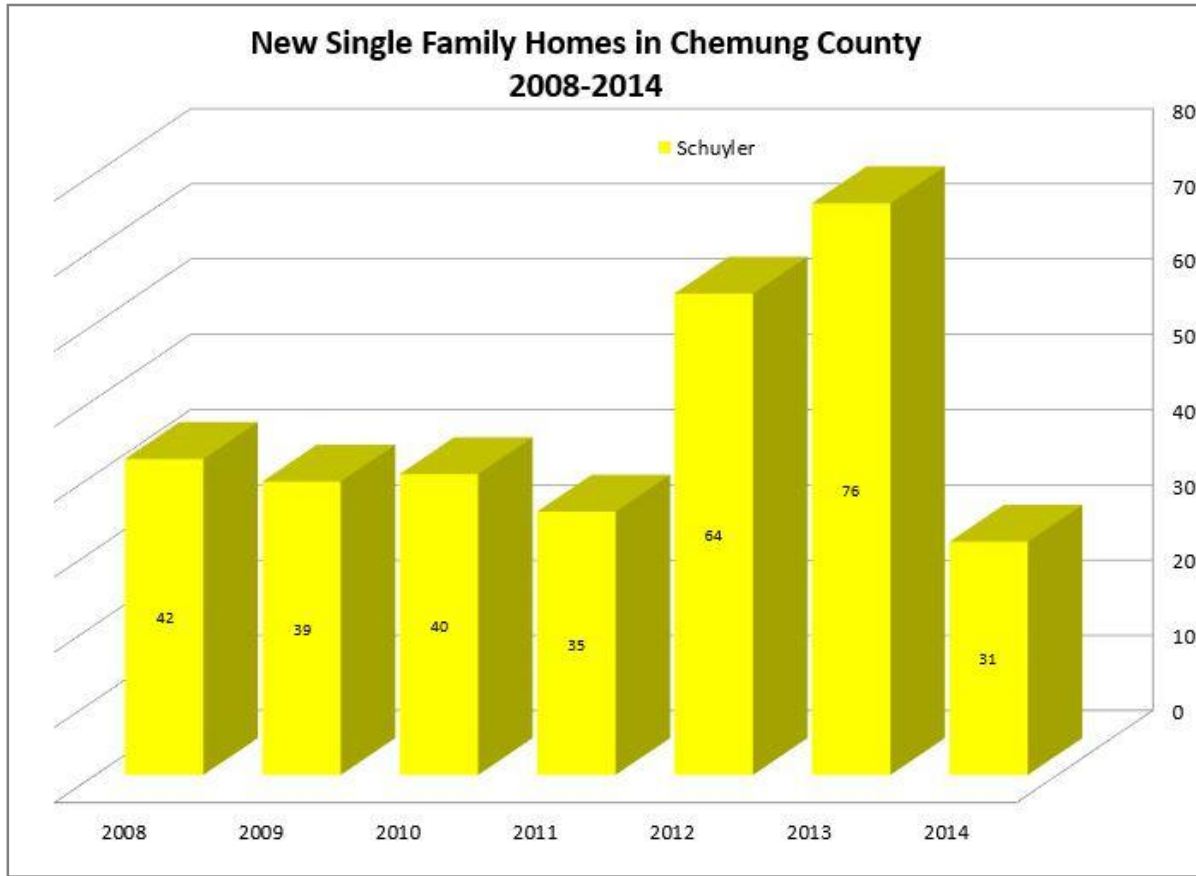
| CHEMUNG MAJOR EMPLOYERS | EMPLOYEES |
|----------------------------------|------------------|
| Access Midstream | 100 |
| American Customer Care | 250 |
| Anchor Glass Container | 300 |
| Arnot Health | 2,300 |
| CAF USA | 400 |
| Cameron Manufacturing and Design | 235 |
| Chemung Canal Trust | 300 |
| Corning Incorporated | 225 |
| Cutler-Hammer | 325 |
| CVS Distribution Center | 550 |
| Dalrymple Gravel and Contracting | 200 |
| DeMet's Candy Company | 250 |
| DePuy Synthes | 400 |
| Eaton Electrical | 275 |
| Elcor Health Services | 250 |
| Elmira College | 300 |
| Elmira Savings Bank | 125 |
| Emhart Glass | 115 |
| General Revenue Corporation | 325 |
| Guthrie Health Care | 150 |
| Hardinge Inc. | 590 |
| Hilliard Corporation | 600 |
| Hunt Engineers | 100 |
| F.M. Howell & Company | 350 |
| Kennedy Valve (McWane Inc.) | 350 |
| NYSEG | 175 |
| Schlumberger | 300 |
| Southern Tier Custom Fabricators | 170 |
| Swift Glass | 100 |
| Tops Markets | 200 |
| Travelers Insurance | 190 |
| Trayer Products | 120 |
| Verizon | 175 |
| Vulcraft of NY, Inc. | 325 |
| Walmart | 225 |
| Wegmans | 160 |

| STEBEN MAJOR EMPLOYERS | EMPLOYEES |
|-------------------------------------|------------------|
| Absolut Care at Three Rivers | 150 |
| Alstom | 575 |
| Arc of Steuben | 353 |
| Bath Veterans Administration | 754 |
| Corning Credit Union | 240 |
| Corning Hospital | 709 |
| Corning Incorporated | 5146 |
| Crowley Foods/HP Hood | 130 |
| Dresser-Rand/Siemens | 590 |
| Gunlocke Co., Inc. | 700 |
| Guthrie Medical Group, P.C. | 296 |
| Ira Davenport Hospital/Arnot Health | 295 |
| Kraft-Heinz | 385 |
| Mercury Aircraft | 175 |
| Pathways | 675 |
| Sitel | 300 |
| St. James Mercy Hospital | 305 |
| Wegmans | 460 |
| World Kitchen | 557 |

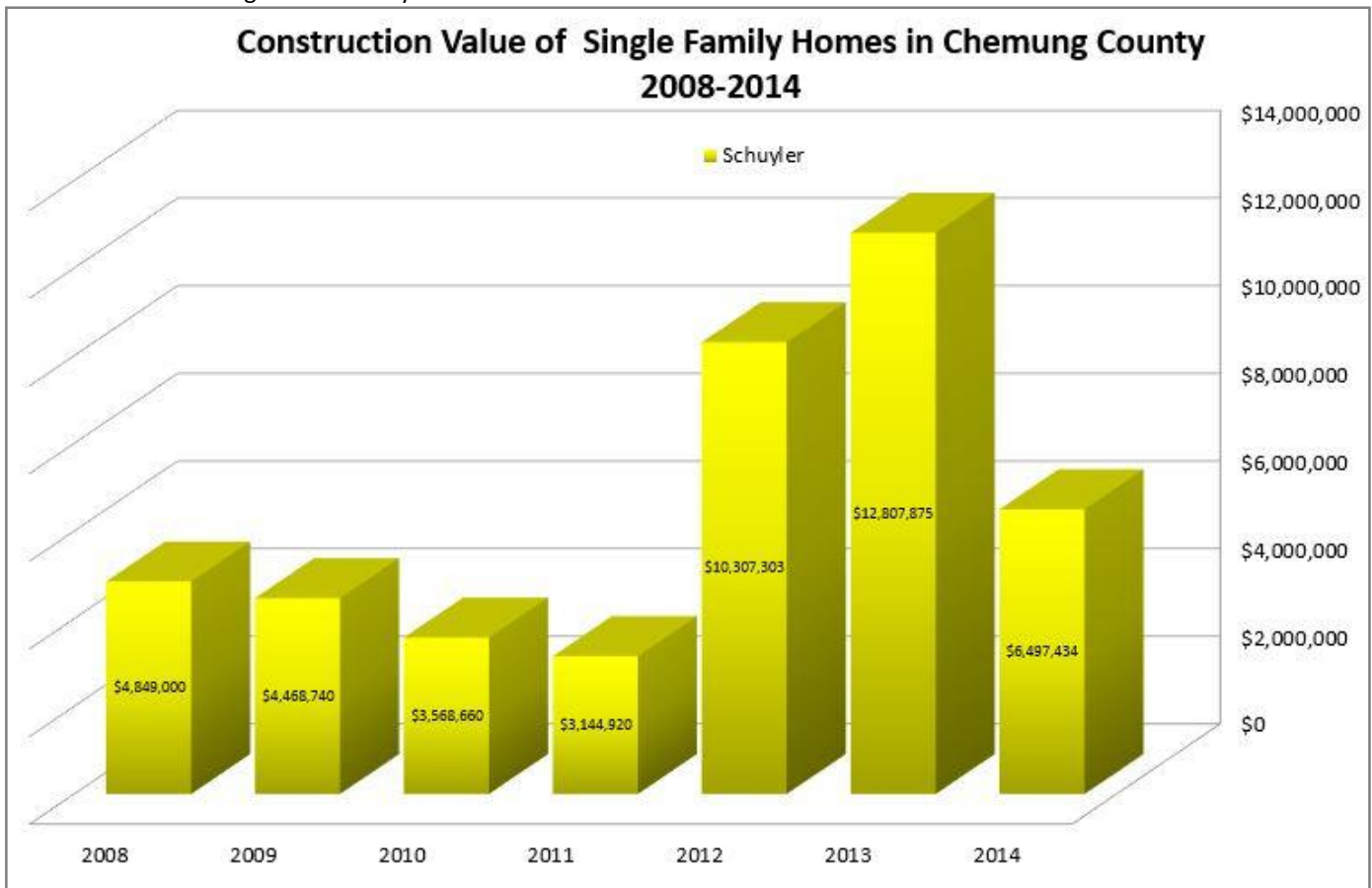
| SCHUYLER MAJOR EMPLOYERS | EMPLOYEES |
|---------------------------------|------------------|
| BMS | 37 |
| Cargill | 111 |
| Hazlitt 1852 Vineyards | 39 |
| Harbor Hotel | 128 |
| Schuyler Hospital | 435 |
| US Salt | 127 |
| Wagner Hardwoods | 90 |
| WalMart | 243 |
| Watkins Glen International | 86 |
| Welliver McGuire | 77 |
| Wine & Glass Tours | 100 |
| Parmenter Motors | 85 |

Data collected in 2015 & 2016
by SCIDA, STEG, and SCOPED

New Housing Units

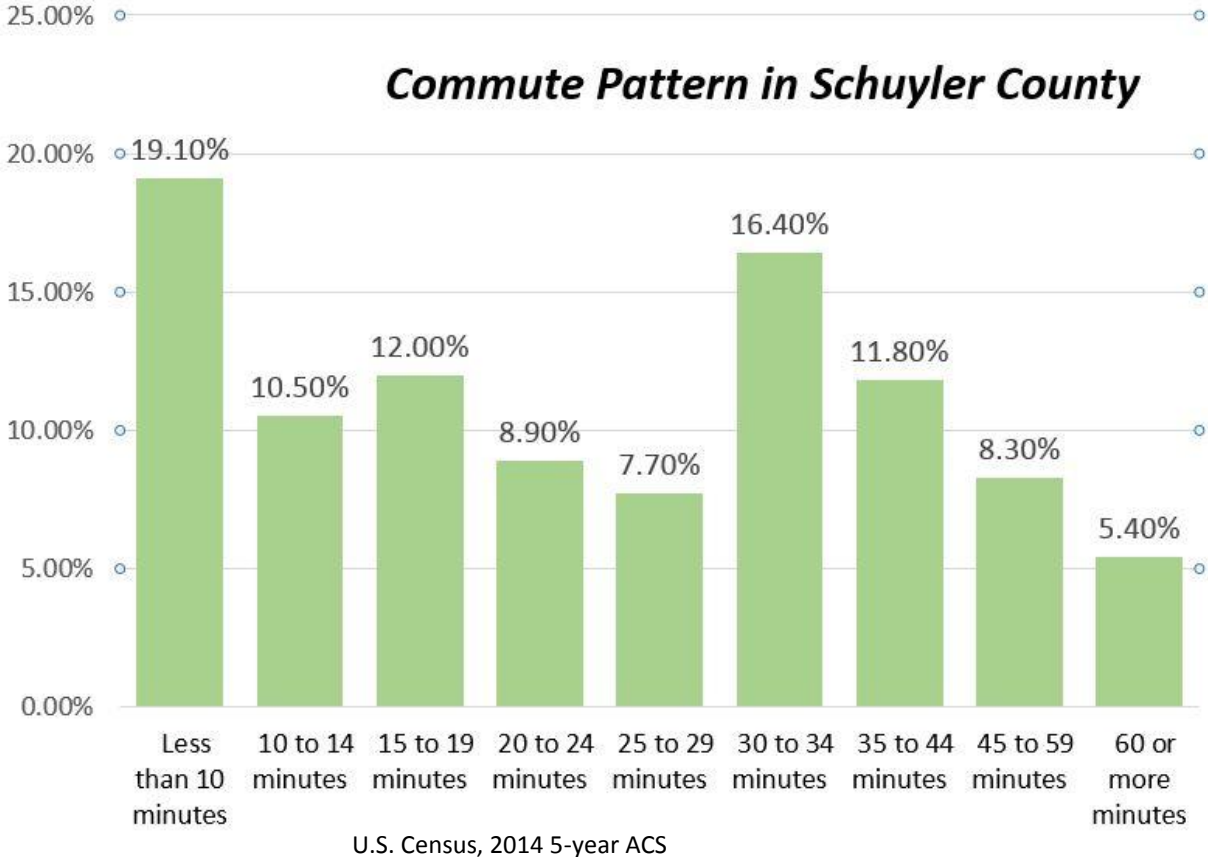


U.S. Census: Building Permit Survey 2008-2014

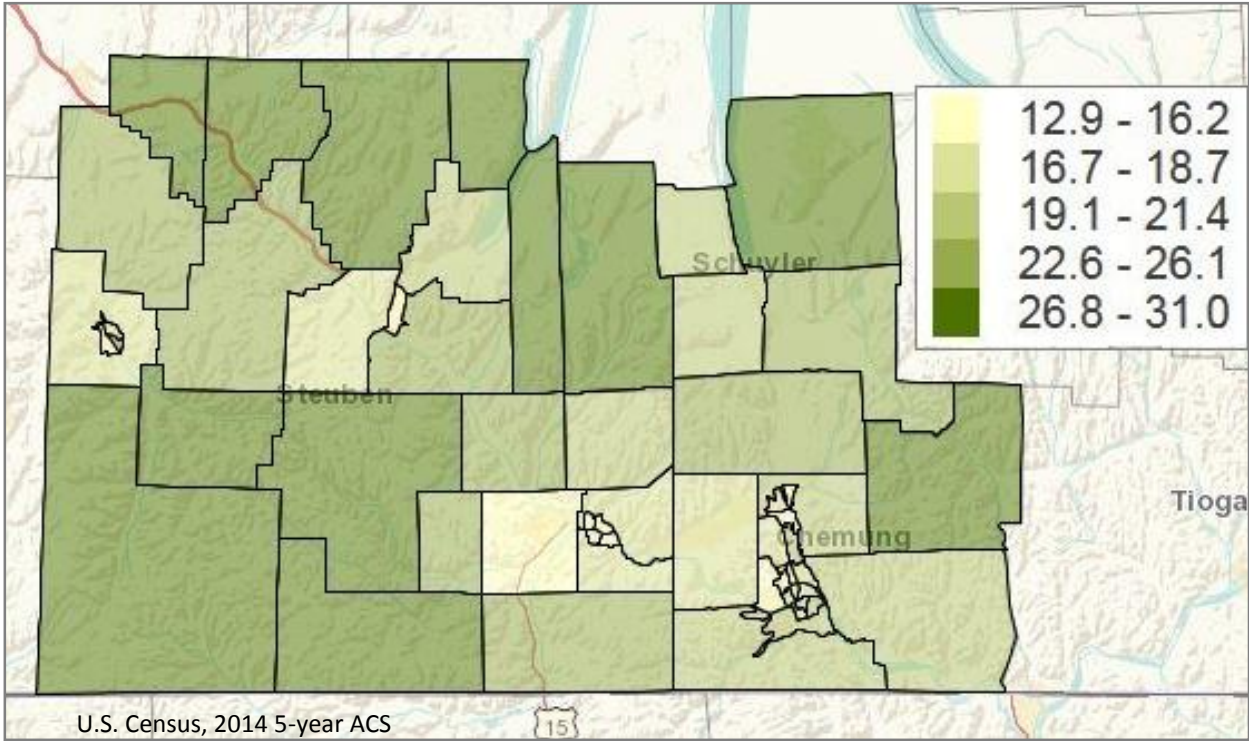


U.S. Census: Building Permit Survey 2008-2014

Transportation & Travel

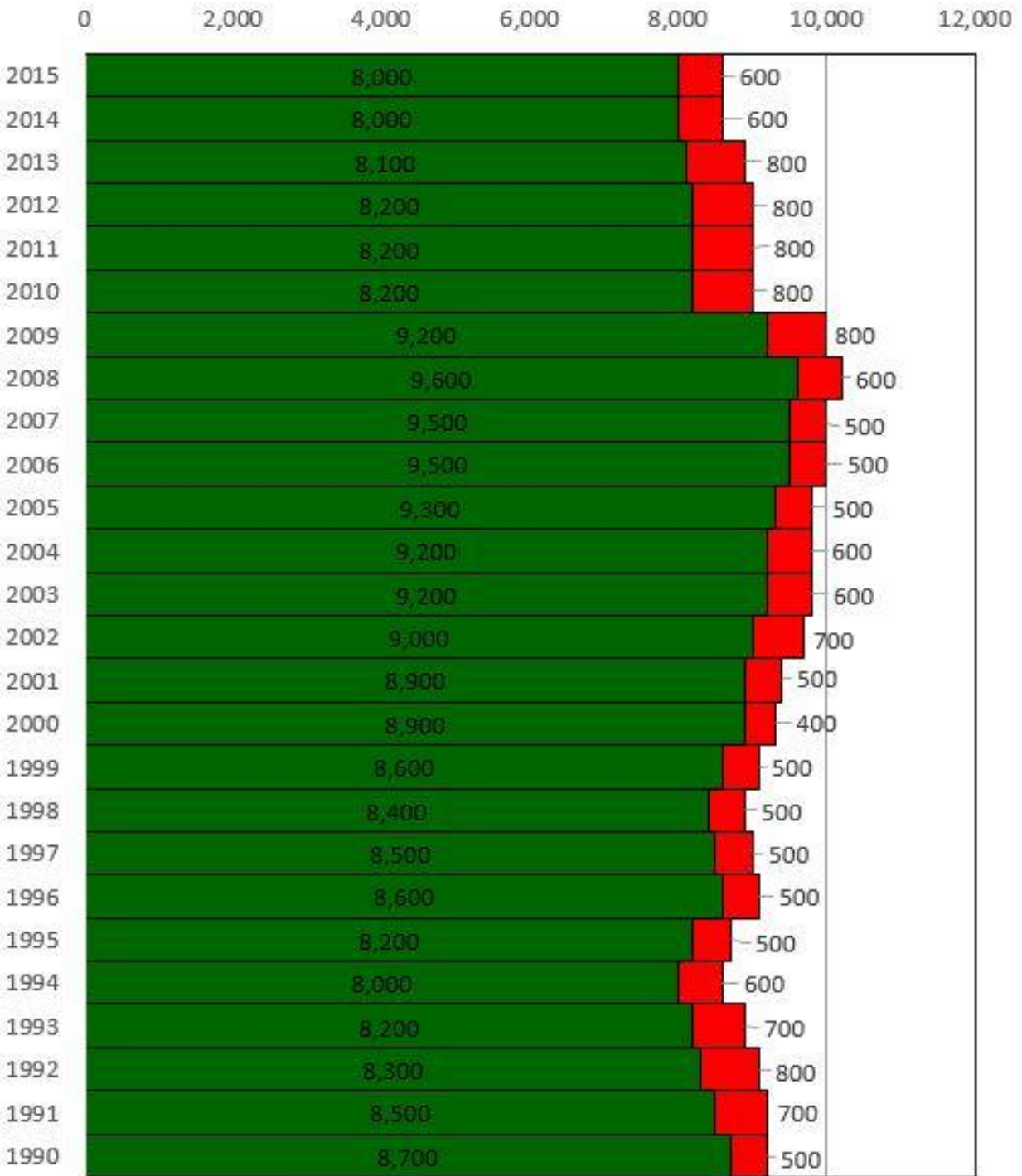


Average Commute in Minutes by Census Tract



Workforce Totals Schuyler County

■ EMPLOYED ■ UNEMPLOYED



Source: NYS DOL LAUS

For additional information, contact:

Victoria Ehlen
 Economic Development Coordinator
 economicdevelopment@stny.rr.com
 Phone: (607) 962-5092
 Fax: (607) 962-3400

STCRPDB
 8 Denison Parkway East
 Suite 310
 Corning, NY 14830
www.stcplanning.org