



Current Land Use Map

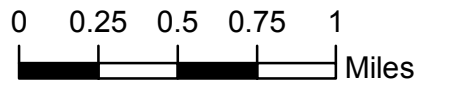
This map was prepared for the New York State Department of State with funds provided under Title 11 of the Environmental Protection Fund

Assistance provided by:
 City of Corning, Town of Corning,
 Village of Painted Post, Village of Riverside,
 Friends of the Chemung River Watershed &
 Southern Tier Central Regional Planning & Development Board

Consultants
HAAS LANDSCAPE ARCHITECTS
 Site Design, Land Planning, Urban Design
 Binghamton, NY 607.723.6005
 Rick Manning- Landscape Architect
 Foor & Associates- Architects

LEGEND

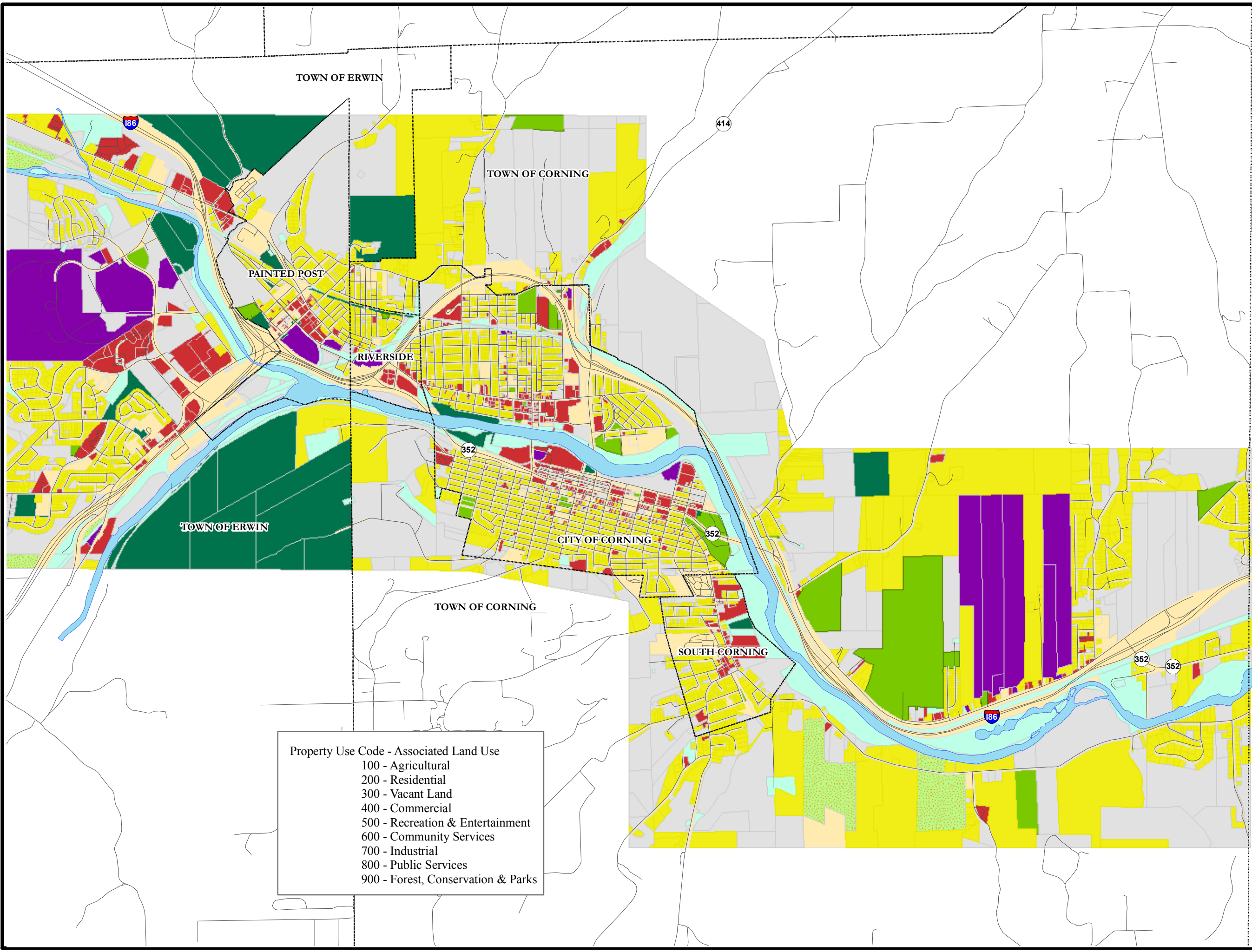
- MUNICIPAL BOUNDARY
- RIVER
- ROADS
- LAND USE DESCRIPTION**
- AGRICULTURAL
- COMMERCIAL
- COMMUNITY SERVICES
- INDUSTRIAL
- PUBLIC SERVICES
- RECREATION, ENTERTAINMENT
- RESIDENTIAL
- VACANT LAND
- FORESTED, CONSERVATION, PARKS



N North American Datum 1983
 New York Central Plane Feet



Map #



Property Use Code	Associated Land Use
100	Agricultural
200	Residential
300	Vacant Land
400	Commercial
500	Recreation & Entertainment
600	Community Services
700	Industrial
800	Public Services
900	Forest, Conservation & Parks